


February 2017

The Messenger

A photograph of a wooden cross standing in a field of bare trees at sunset. The cross is made of two weathered wooden beams. The background is a warm, golden-orange sky with the silhouettes of many bare trees. The overall mood is contemplative and hopeful.

I am often struck at this time of year with a feeling of hopefulness. The darkest of winter has passed, the sun feels warm as the days grow longer, all while our green paraments adorn the sanctuary as if testifying to the life that will soon emerge beyond the looming season of Lent. And with Easter coming so late this year, all of February will be dedicated to the season of *Time after Epiphany*, in which we continue to ponder the *epiphanies* that reveal Jesus to us and to our world.

These *epiphanies* energize us, I think, in our continual, restless pursuit of wholeness and healing that God is bringing to us and our world. Theologian W. Paul Jones, in his book *Theological Worlds*, talks about *epiphanies* as the revelations that speak to our deepest wonderings and longings in our life of faith. I wonder, then, what *epiphany* are you waiting to experience? What separation, what conflict, what emptiness or condemnation or suffering has not yet fully been addressed by God in your life? In our life? In all of human and created life?

How might these stories of our Lord reveal the way to new *epiphanies* in our world?

I doubt that we will reach a poignant conclusion before Lent begins on March 1st, but perhaps that's not what this season of *Time After Epiphany* is about. Perhaps it is about continuing to press into the uncertainty of waiting for *epiphanies*, hoping that God will continue to be faithful on the journey ahead, no matter where it takes us.

Peace to you this February.

Pastor Paul

Congregational Life

Interviews for New Staff Have Begun

Three interview teams are now set and have begun contacting and/or interviewing candidates for our open positions at Mount Olive. We have several outstanding candidates and hope to decide soon on several of the positions. If you, or someone you know is interested in any of the open positions, please go to the church website (molive.org) and click on Contacts and you will see the full job descriptions and the application form. If you have any questions, please talk to a member of the staff.

The positions being advertised are:

Director of Children, Youth and Family Ministries – full-time

Director of Missions, Service and Social Outreach – part-time

Media & Publications Designer – part-time

Webmaster & Administrative Assistant – part-time

Volunteer Church Office Receptionists Needed

Part of Mount Olive's staff restructuring includes making use of volunteers to serve as receptionists in the church office. Volunteer duties include providing a friendly welcome to church visitors, answering and transferring phone calls, receiving deliveries, and supporting staff as needed. If you would be willing to help out, please talk to Nancy Britson, or any member of the church staff. Help is needed Monday through Thursday mornings. A schedule with open dates is available in the church office.



Wednesday evening meal, learning and service continues!

5:30 Meal: Open to all, there is a suggested \$3 donation. Sign up in the gathering area to help with serving or clean up

6:00 Metamorphosis: Community learning for all ages. Meet in the Fellowship Hall. The Winter unit focuses on the 10 Commandments.

6:30 Lutheranism Class: Introductory class for adults and 9th grade students. Meet in the library with Pastor Glenn. (Last class Feb. 22)

6:30 F.I.S.H. (Fun in Serving Him): A service group for 1st to 5th graders. Meet with Carrie Fletcher in rooms 5 and 6.

Going to Day on the Hill?

Each February members of faith communities in Minnesota meet on Capitol Hill in St. Paul to lobby their lawmakers on behalf of people who have no voice – the homeless, the poor, the chronically mentally ill, and others who so easily can be forgotten. This year the Day on the Hill, sponsored by the Joint Religious Leadership Coalition, will be Thursday, February 23rd. Registrations are due by Feb. 14th at a cost for the day of \$40, including lunch. (Students/low income are \$25). We will carpool from the Mount Olive parking lot at 7:00 am and arrive back in Rochester around 4:00 pm. Please sign up and pay in the Gathering Area. For more information, talk to Pastor Glenn or visit <http://jrlc.org/day-on-the-hill>

Church Taskforce Update

The Inclusive Church Taskforce gathered on January 12 to continue organizing the process for Mount Olive to become a Reconciling in Christ congregation. In the months to come, the team will be preparing opportunities to gracefully engage with one another in learning how we can continue building a community centered around hospitality and justice. Our team members, Pastor Glenn Monson, Pastor Paul Moody, Mickaela Pasch, Randi Beyerl, Elmer Odland, David Johnston, Becky Lashinski, Jake Johnson, Tom Rigby, and Paula Freitag, are excited to talk with anyone interested in participating in a variety of ways throughout this process. If you have any questions or would like to meet individually, please let any one of us know and we'd be happy to get together.

The team is happy to answer questions and chat about the Reconciling in Christ process.

Check it out: <http://www.reconcilingworks.org>

Photo Directories are in!

The new *Lifetouch* congregational photo directories have arrived. Everyone pictured receives a complimentary directory which you will find in your church mailbox. You'll notice that the directory is smaller and has less "frills" than our previous one. The advantage of this *Community Book* directory is that they can be reprinted regularly as new members join, babies are born, etc. We hope to schedule another photo session in the next few months. If you would like to be pictured, contact Nancy in the church office to be added to the list.



World Day of Prayer

**Good Shepherd Lutheran Church,
Saturday, March 4, 10:00 am**

Speaker: Woody Roland, Missionary to the Philippines

Music: Jane Belau

World Day of Prayer is a worldwide, ecumenical movement of Christian women of many traditions who come together to observe a common day of prayer each year, and who, in many countries, have a continuing relationship in prayer and service. Everyone is welcome. Contact Dorothy Ostrom for more information—288-2297

Please contact the church staff if you have any prayer concerns:

- Pastor Glenn: glenn@molive.org
- Pastor Paul: paul@molive.org

Spiritual Care

Mount Olive has a Prayer Chain, coordinated by Kim Ignatius. If you have a prayer request and would like the prayer chain to be in prayer for you or someone you love, please contact Kim at: 507-271-6087 or ignatius.kimberlie@charter.net.

Fair Trade Coffee

Stop by the **Fair Trade Coffee** display in the gathering area to check out the varieties of ground and whole bean coffee and tea available for purchase. You can also sign up to sponsor the coffee on an upcoming Sunday. For \$15 you can help offset the cost of the coffee served during fellowship time and celebrate an occasion such as a birthday, anniversary, or the memory of a loved one.



Altar Flowers

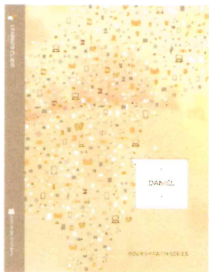
You may sign up to provide the flowers that brighten the sanctuary each week. Place orders for birthdays, anniversaries, baptismal birthdays, births, or in memory of loved ones. Sign up in the gathering area, fill out an envelope and include payment. Place orders at least one week in advance. Bouquets are \$30 and bud vases range from \$7.50-\$13.50.



Education

Lenten Bible Study

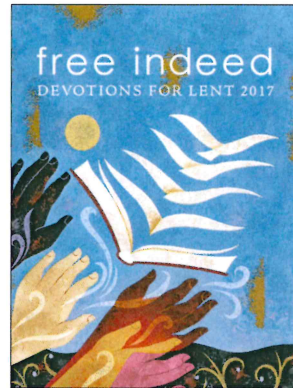
Pastor Glenn will be leading a study each Wednesday at 6:00 pm and Sunday at 9:15 am on the book of Daniel, one of the apocalyptic books of the Old Testament. Explore the stories of Daniel and his friends in this rich and inviting study. The course provides an opportunity to ponder our calling as faithful disciples in troubling times. The study guide used is from the Book of Faith



series published by Augsburg Fortress. The author is Gwen B. Saylor. Books are \$7.00. Sign up at the Lenten table in the front entry where envelopes are available for study book purchase.

Lenten Devotions Available

This beautiful, full-color devotional takes you through Lent with daily readings from Martin Luther's Small Catechism. Each reading is accompanied by a photo, a quote to ponder, reflection, and prayer. Free Indeed invites you to reflect on Martin



Luther's guide to the basics of Christian faith during the Lenten season, and within the observance of the 500th anniversary of the Reformation. Pick up at the Lenten table in the entry. Large print available.

Sunday Forums are highlighting Interfaith Dialogue

A unique opportunity to hear from members of different faith communities is coming to Mount Olive in February. We have invited local members of non-Christian faith communities – Muslim, Sikh, Buddhist, Jew, Hindu – to be part of an interfaith panel during our 9:15 Sunday forums. Pastor Glenn will act as moderator and we will hear from each member of the panel as they speak about their particular practice regarding such things as prayer, initiation rites (e.g. baptism), and funeral practices. It promises to be a very interesting dialogue as we learn from one another how God calls different faith communities to participate in our common search for and life with God.

Sunday Adult Forum

9:15 am Grab some coffee and gather in the fellowship hall. The schedule for February is as follows:



- February 5** Interfaith Dialogue – Session #1
- February 12** Service Sunday-no forum
- February 19** Living the Questions– Session #3
- February 26** Interfaith Dialogue –Session #2

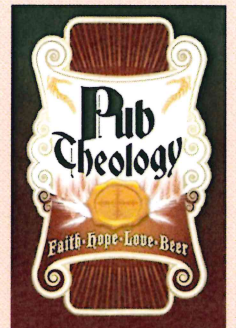
Pub Theology

Forum with Pastor Paul. Conversation focuses on topics that connect faith, spirituality, and our world. Each week's discussion is posted ahead of time at rochesterpublictheology.wordpress.com and via email. If you would like to be included on the email distribution list, please email Pastor Paul at paul@molive.org.

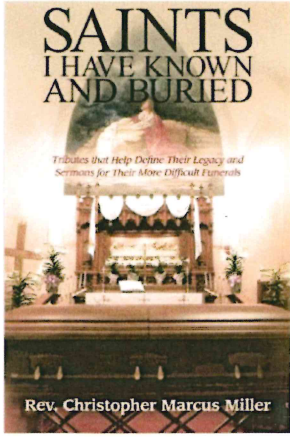


Who? All are welcome.

When? Monday evenings, 5:30 p.m. - 7:00 p.m.
at Life's Too Short Brewery



"Ending Well" Workshop

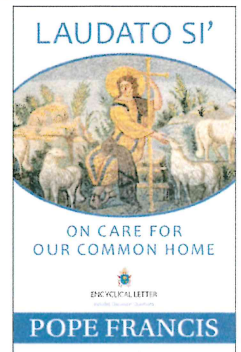


On Saturday, February 11, 9:00 – 11:30 am, we will be offering a workshop entitled "Ending Well". Pastor Glenn and Pastor Chris Miller, retired ELCA pastor and member of Mount Olive, will be leading this workshop. Topics to be covered are funeral service planning, testimony or tribute writing (i.e. obituaries and eulogies), Mount Olive columbarium information, and memorials (gifts to the Mount Olive endowment fund). Participants will be working through each of these areas so that they will be better equipped to make decisions with family members as time goes on. All are welcome, both those who are interested in doing planning for their own use, and family members who are interested in doing planning for another family member. This workshop is offered free of charge. Sign-up in the gathering area at church. For more information, talk to Pastor Glenn.

FSU Resumes February 7, 6:30 pm, in the library

The Faith Seeking Understanding group will meet to discuss ***Laudato Si' : On Care of Our Common Home***. In his second encyclical, Pope Francis draws all Christians into a dialogue with every person on the planet about our common home. We as human beings are united by the concern for our planet, and every living thing that dwells on it, especially the poorest and most vulnerable. Pope Francis letter joins the body of the Church's social and moral teaching, draws on the best scientific research, providing the foundation for the ethical and spiritual itinerary that follows.

All are welcome! If you have any questions, please contact Jody Myers at jodyjpmymers@gmail.com.



Annual Meeting Meal

Thank-you from all the Women of the ELCA for your generous contributions at the annual meeting meal. Your continued support of our many events and projects is greatly appreciated and has been a blessing to so many within our congregation, our community and across the globe.



Upcoming Events:

Mount Olive Women's Day of Service

Saturday **March 11th**, 9:00 am. All women and girls grades 6-12 are invited to participate in this 2nd annual event for service, fellowship and growth. Look for more details and sign up for a variety of projects.

Zumbro River Conference Women of the ELCA Spring Event

Mount Olive hosts the Zumbro Conference on **April 20th** for a meal, program, and worship service. All Mount Olive women are invited. The presenter will be Pastor Nirmala Reinschmidt. Watch for more information and the opportunity to help with the event.. Contact Sherry Will, Nancy Britson, Denise Foy, or Kim McKeon for more information.

Triennial Gathering in Minneapolis

The national gathering of the Women of the ELCA that happens every three years will be this July 13-16 in Minneapolis. This is a great opportunity for women to experience outstanding speakers, dynamic worship, and meeting women from all over the country. Visit the table in the entry at church to learn how to register and sign up for car-pooling opportunities. Contact Ruth Monson with questions, ruth.a.monson@gmail.com.

Women of the **ELCA**

Service

Second Sunday Service

On the Second Sunday of each month, we are focusing our education hour on service. This month, on February 12th beginning at 9:15, we will make blankets for the Hugs from Hunter Foundation. This organization donates blankets to hospitalized children and children in crisis. Read more at hugsfromhunter.org. All ages are encouraged to participate.

Many thanks to the knitters, sewers, fabric cutters, those who donated supplies, bundlers and all who helped assemble a Baby Care Kit in January. One of the underlying causes of malnutrition is poor infant caregiving and hygiene. Your Baby Care kits will be a valuable resource in reversing that in the lives of a mother and child in need. Because of your generous giving of time, talents and donations we were able to assemble 54 Baby Care Kits.

Thank you!



Service Day January 15, 2016



In January, Lutheran World Relief Baby Care Kits were assembled and Valentines were made for delivery to shut-ins.

Backpacks for John Adams

Drivers and Packers are needed for this food program for students at John Adams Middle School. The schedule is always posted on the Volunteer Sign-up Table in the Gathering Area. Select the date/time you will perform one or more of these tasks. Contact Warren Kemplin at 254-4932 with questions or for a replacement driver or packer should you have a conflict.



Lutheran World Relief
SUSTAINABLE DEVELOPMENT. LASTING PROMISE.

Lutheran World Relief's supply of Personal Care Kits remains critically low as requests for assistance across the world increase.

These kits containing basic hygiene supplies help reduce the spread of germs and disease. They are sent around the world to people dealing with the effects of war, disaster and poverty. Personal Care Kits send a tangible message of God's love amidst suffering and help families stay healthy in difficult living conditions. If you are willing to donate to help others around the world, the list of items needed to complete a kit is available for you to pick up from the table in the gathering area. Kits will be assembled at the Service Sunday in March.

In February we will be collecting items for **Personal Care Kits** to help our neighbors around the world.



Fun In Serving Him Continues through Feb. 22 at 6:30

(A service group of children in grades 1 - 5)

The winter session meets on Wednesday evenings at 6:30 p.m. through February 22. We will be making cat hammocks for Camp Companion, baking treats for the firefighters, and making cards for hospitalized members and the homebound. We will have some other service projects as well. If you have any questions about FISH or are interested in joining the group, please feel free to contact Carrie Fletcher at cxnfletch@aol.com New friends are always welcome!

Lenten Soup Suppers Noon and Evening

Soup suppers will be served beginning Ash Wednesday, March 1 at **both** 12:45 pm following the noon services **each week** and at 5:45 pm

prior to the 7:00 services. The freewill offering this year will support ELCA World Hunger.

If you would like to help with serving or clean up, please sign up at the table in the front entry or contact Nancy Britson at nancy@molive.org or 288-1580 ext. 202 .



Mission Colombia Youth Support

The group from Mount Olive travelling to Bogota Colombia in March will include five Mount Olive youth: Joey and Daniel Krieger, and Sonja, Nels, and Mardoche Pierson. The trip is an amazing opportunity for them and their adult companions to connect with the Lutheran Church of Colombia (IELCO) and to visit, listen, and learn of their hopes and dreams.

While a great opportunity, the trip is also costly, over \$1500 each. The group would like to raise at least \$4000 of the over \$7500 needed for the youth to participate in this trip. You are invited to contribute to this cause with cash or check to the church office or donate online at molive.org. Designate your "Bogota 2017" under "other". Thanks for your support!



C.F.R.

Community Food Response

Community Food Response

(CFR) is a volunteer-led nonprofit that provides free meals to hungry people to take home or eat elsewhere.

The food they distribute is donated by restaurants, cafeterias, businesses and grocery stores. C.F.R. is ex-

panding their operations to include the NW quadrant of Rochester. They are opening a second location near the new Gage East Apartment complex. There is a growing need to help serve the hungry in this part of the city and to help those residing in the new apartments. We have been given an opportunity to participate in this ministry. A group of volunteers is needed once a month to help collect, sort and distribute food to those in need. If you are interested in participating in this ministry or for more information, please contact Pastor Glenn at Glenn@molive.org.



Family Promise®

Mount Olive will be hosting homeless families participating in **Family Promise** for 3 more weeks in 2017, please mark your calendars with these dates:

March 5-12

Nov 19-Dec 2nd

(2 weeks back to back)

Mount Olive Quilters

Thursdays at 9:00 am

**You are invited each week to
enjoy quilting and fellowship**



Prayer Shawl Ministry

Tuesday, February 14th at 9:00 am

All knitters and crocheters are invited. Yarn, treats, guidance, wisdom, support, and humor are shared! Gather in the front conference room.

Dorothy Day Volunteers Needed

March 3, April 7, May 5

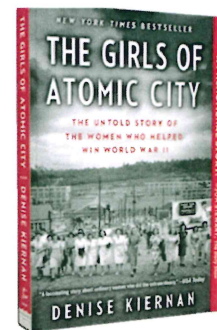
Two or three volunteers are needed to prepare and serve dinner to guests at the Dorothy Day Hospitality House. Dinner is served at 6 pm. This is a wonderful service opportunity for all: families, youth, confirmands and other groups. Sign up on the Dorothy Day volunteer calendar located in the gathering area. Contact Anna Strand (Mount Olive volunteer contact for Dorothy Day Hospitality House) with questions at 617-899-2484 or annabstrand@gmail.com.

Fellowship

Monday Book Group

The Monday Book Group will be meeting **February 13 at 6:30** in the library. We will be discussing *The Girls of Atomic City* by Denise Kiernan. This *New York Times* bestseller is an incredible true story of the top-secret World War II town of Oak Ridge, Tennessee, and the young women brought there unknowingly to help build the atomic bomb.

New readers are welcome to join us anytime! If you have questions contact Jodi Schoer at mjschoer@charter.net



Ripe Olives meet at Mount Olive

Friday, Feb. 10th at 9:30 am

Ripe Olives is a group of Mount Olive's seniors (60+) who meet monthly for fellowship, food, and learning. This month the group returns to Mount Olive for coffee, treats, and a presentation by Terry Krieger. The topic of Terry's entertaining discussion will be Colombia. You'll learn about the country, the Lutheran presence there, see photos and artifacts, and learn more about the Mount Olive trip planned in March. Everyone is welcome! Sign up in the gathering area.



Scout Pancake Breakfast February 5th

Following both services on February 5th, the scouting groups that meet at Mount Olive will host a pancake breakfast. Come and enjoy pancakes, sausage, juice, and coffee. A free-will offering will be collected to support the scouts.



Coffee Fellowship Volunteers Needed

Following Sunday services at Mount Olive, coffee and cookies are served in the fellowship hall. This is a great time to catch up with friends over a cup of coffee, for kids to pick a favorite cookie, and to connect with a visitor. **More serving volunteers are needed.** If you are willing to spend a few minutes serving coffee, cookies, and lemonade it would be greatly appreciated. Please contact Nancy Britson if you are available to help. nancy@molive.org or 288-1580 ext. 202



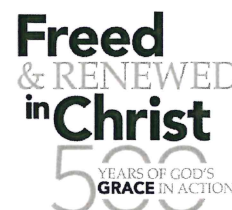
GERMANY TRIP-Fellowship Event for Interested Travelers

Interested in joining us as we head to GERMANY for the 500th anniversary of the Reformation?

Come and experience a bit of Germany here in Rochester, as we learn a few German phrases and sample some German beers at **Whistle Binkies North, Thursday, February 23rd, from 6-8 p.m.** in the fireside room (immediately

to the right as you enter the front door).

Our trip to Germany will be Sept 27 to Oct 6, 2017, and there are still many spots available. More information available at myfaithjourneys.com/login, group # 17013.



Worship

Lenten Season begins on Ash Wednesday, March 1

The season of Lent, one of the richest seasons of the year for Christians, will begin at Mount Olive with three worship services on Ash Wednesday, at noon, 5:00 pm and 7:00 pm. Each service will feature the (optional) Imposition of Ashes, as well as Holy Communion. Also, in a bit of a change this year, we will offer a simple soup meal **both after the noon service and at 5:45 pm**. All proceeds from the soup suppers will go to ELCA World Hunger.

Lent at Mount Olive is going to be rich in Worship, Fellowship, Education and Service.

Worship: Midweek services will be held at **both noon and 7 pm** each week. The focus for each week will be a different portion of Luther's Small Catechism. A daily devotional guide will go with each week.

Fellowship: Each Wednesday at 12:45 and 5:45 a simple soup meal will be offered in the Fellowship Hall. What a great opportunity to see friends and introduce guests at Mount Olive.

Education: Pastor Glenn will be leading a study each Wednesday at 6:00 pm and Sunday at 9:15 am on the book of Daniel, one of the apocalyptic books of the Old Testament. Books are \$7.00.

Service: All during Lent, worshippers are encouraged to bring non-perishable items to church for Channel One. The children will bring them into worship each Sunday with the offering all through the season. Also, each Wednesday meal will be an opportunity to make a donation to ELCA World Hunger.



Interested in membership at Mount Olive?

There will be an informational coffee for interested visitors on February 5th following the 8:00 service at 9:00 in the library. Please come to meet the staff, other new members, and learn about the ministries at Mount Olive.

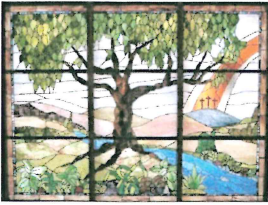
New Members will be received into membership on February 19th at the 10:30 service. A reception will follow the service to give everyone a chance to extend a warm welcome to the new members. For more information, please contact Nancy Britson, nancy@molive.org.

Worship Volunteer Update

At each worship service at Mount Olive, volunteers serve in many roles: greeters, ushers, communion assistants, assisting ministers, acolytes, nursery volunteers and more. More volunteers are always needed, especially during the season of Lent with midweek services. Training is available for new volunteers and families are encouraged to serve together as well.

How do I get involved? Volunteers receive regular notices via the online sign up site: **Sign Up Genius**. To receive an invitation to the website, or if you "don't do computers" but are willing to serve, please contact Nancy Britson, Director of Congregational Life, and she will help you: nancy@molive.org 288-1580 ext. 202. Sign up opportunities will also be on the Lenten table in the front entry.

Current Volunteer Schedules are emailed to all participants monthly. The schedule is also available on the church website under "Service" and on the Sign Up Genius site.



Mount Olive Lutheran Church
2830 18th Avenue NW
Rochester, MN 55901

ADDRESS SERVICE REQUESTED

Non-Profit Organization
US Postage Paid
Rochester, MN
Permit Number 113

Mount Olive Lutheran Church

2830 18th Ave. NW

Rochester, MN 55901

Office Hours: 9:00 am-4:00 pm Mon.-Thurs. 9:00 am-noon Fri.

Phone: 507-288-1580

Website: molive.org



The Rev. Dr. Glenn Monson— Senior Pastor

glenn@molive.org Ext. 206

Brock Besse— Minister of Worship and Music

bbesse@charter.net Ext. 203

Nancy Britson— Director of Congregational Life

nancy@molive.org Ext. 202

Carrie Fletcher— Nursery Coordinator

Rev. Paul Moody—Associate Pastor

paul@molive.org Ext. 205

Bill Hollander— Congregational Administrator

bill@molive.org Ext. 204

Tina Coil— Nursery Assistant