



# *The Messenger*

**Mission: Colombia** has been over 9 months in the planning, and now it is almost here. On March 10<sup>th</sup> twelve intrepid souls from Mount Olive (including 5 youth) will board a plane for Bogota, Colombia to begin what we hope will be a long-lasting and fruitful partnership in ministry between us and the people of the Lutheran churches of Colombia. We will stay for 10 days, visiting 4 Lutheran churches/schools, as well as 2 other ministry sites, one to street children and another to impoverished seniors. Our hosts on the trip will be the staff of the Lutheran Church of Colombia (IELCO), as well as ELCA missionaries, Curtis and Katie Kline, who were guests of Mount Olive in summer 2016.

We are taking with us gifts from Mount Olive: quilts from our quilters, school kits and greeting cards from our Sunday School, and hats and mittens collected by our Service and Social Ministry Team, and tote bags sewed by members. On two Sundays we will worship at two different churches, and at one other church on a Wednesday evening. We will also visit some of the historical and cultural sites in Bogota.

Our hope in going on this trip is that we will get a good idea of what a partnership in ministry will look like with a congregation or ministry in Bogota. We may find out that an educational ministry is where God is calling us. Or we may find that working with impoverished children or seniors is God's call. Perhaps we will learn of opportunities for hosting Lutherans from Colombia here in the U.S., or for making connections between pastors and other church workers. We don't know what to expect, but we believe God is calling us to this new venture.

Members of Mount Olive can support Mission Colombia by lifting up team members every day between the day they leave and the day of their return on March 20. Also, members are encouraged to "Invest in our Youth" by giving a gift to Mission Colombia to defray the costs for the youth going on this trip. The youth are at 40% of their goal; the deadline for contributions is March 6.

Be sure to be in worship on the weekend of March 25-26 when the congregation will receive the report about the trip from the team upon its return.

Team members are: Terry, Carrie, Joey, and Daniel Krieger, Nicole, Sonya, Nels, and Mardoche Pierson, John Langemo, Sherry Will, Pastor Glenn and Ruth Monson.

Thank you for your prayers and support!

Pastor Glenn

# Congregational Life

## Update on Church Staffing

We are very happy to announce that our two administrative positions have now been filled. Carrie Fletcher, long-time active member of Mount Olive, who has served in various other capacities, has begun work as our new Webmaster/Administrative Assistant. Carrie has a degree and experience in business administration and comes to us with great enthusiasm and love for Mount Olive.

Our Social Media/Publications Designer position has been filled through conversations with one of our candidates, Emily Carson, who also is the Communications Director for the Southeastern Minnesota Synod of the ELCA. We will be contracting with Emily as a consultant and publications designer on an as-needed basis. Current staff will fulfill other publication needs.

Interviews with a number of qualified candidates for the position of Director of Children, Youth and Family, have just been completed, and the hiring team is pondering next steps.

The only position that remains open at this point is the Director of Missions & Service and Social Outreach. We have yet to identify candidates to be interviewed for this position. If you are interested or know someone who might be, please visit [molive.org](http://molive.org) and click on "Contacts".

## Mayo Clinic Hospice Grief Groups

On Monday afternoons (1-2:30 pm) or evenings (6:30-8:00 pm), April 3 through May 22, Mayo Clinic Hospice will again be offering specialized Grief Support Groups to adults in the community who have lost someone through death. The groups are free of charge and open to the public but advanced registration is required.

The purpose of grief support groups is to provide insight and peer support to adults who are grieving the death of a loved one. Generally it is most beneficial to the participant if the death occurred at least three months prior to attending a group. Each group discusses grief issues and members share stories with the guidance of trained and experienced facilitators.

In order to register please contact Kelley Adelsman, Bereavement Coordinator, at 284-4002 or at [adelsman.kelley@mayo.edu](mailto:adelsman.kelley@mayo.edu).



## Lenten Soup Suppers Noon and Evening

Soup suppers will be served beginning Ash Wednesday, March 1 at **both** 12:45 pm following the noon services **each**

**week** and at 5:45 pm prior to the 7:00 services. The freewill offering this year will support ELCA World Hunger.

If you would like to help with serving or clean up, please sign up at the table in the front entry or contact Nancy Britson at [nancy@molive.org](mailto:nancy@molive.org) or 288-1580 ext. 202.



## Germany Trip Fall 2017

Our trip to Germany will be Sept 27 to Oct 6, 2017, and there are still many spots available. Contact Pastor Paul if you are interested.

## Photo Retakes



Since photos were taken last fall for our *Community Book* photo directory, Mount Olive has had new members join and babies born, and other families who were unavailable for pictures in the fall are now available. We will be scheduling another photo session soon. If you would like to be pictured, contact Nancy in the church office to be added to the list. Every family pictured receives a complimentary 8 x 10 photo as well as a new congregational directory.

## Volunteer Update

March Worship and Coffee Fellowship Volunteer Schedules have been sent to all participants. The schedules are also available on the church website under "Service".

Volunteers have also been invited to help at worship services and fellowship in April, including Holy Week services, via the online sign up site: *Sign Up Genius*. If you did not receive the email invitation or "don't do computers" but are willing to serve, please contact Nancy Britson, and she will help you:

288-1580 ext. 202 or [nancy@molive.org](mailto:nancy@molive.org)

## World Day of Prayer

3

**Good Shepherd Lutheran Church,  
Saturday, March 4, 10:00 am**

**Speaker:** Woody Roland, Missionary to the Philippines

**Music:** Jane Belau

World Day of Prayer is a worldwide, ecumenical movement of Christian women of many traditions who come together to observe a common day of prayer each year, and who, in many countries, have a continuing relationship in prayer and service. Everyone is welcome. Contact Dorothy Ostrom for more information— 288-2297

**Please contact the church staff if you have any prayer concerns:**

- Pastor Glenn: [glenn@molive.org](mailto:glenn@molive.org)
- Pastor Paul: [paul@molive.org](mailto:paul@molive.org)

## Spiritual Care

Mount Olive has a Prayer Chain, coordinated by Kim Ignatius. If you have a prayer request and would like the prayer chain to be in prayer for you or someone you love, please contact Kim at: 507-271-6087 or [ignatius.kimberlie@charter.net](mailto:ignatius.kimberlie@charter.net).

## Inclusive Church Task Force Update - March 2017

### Did You Know?

Mount Olive recently updated language in its Constitution to come in line with standards from the Evangelical Lutheran Church in America (ELCA) regarding process and property. Specifically the changes since 2009 are regarding discipline and process for congregations choosing to leave the ELCA, and new language pertaining to the Ministry of Word and Service, which used to be known as Deaconesses and Associates in Ministry. Information provided by the Inclusive Church Task Force for the Reconciling in Christ (RIC) process at the annual meeting was not part of the Constitutional updates.

### Did You Know?

Many lesbian, gay, bisexual, transgender, and queer (LGBTQ) people have learned by experience that they are not welcome in faith communities, even in those that state, "All are welcome here!" A general statement of welcome is often heard as meaning "everybody but me," so it can take a special effort to communicate an authentic welcome to LGBTQ people. Many RIC communities find that the process of extending a welcome to LGBTQ people opens them up to other people or groups who also need a particular invitation to know that "all" includes them as well.

### Did You Know?

There are over 700 Reconciling in Christ communities and over 400 faith communities like Mount Olive presently exploring the Reconciling in Christ process. Our Southeastern Minnesota Synod of the ELCA identifies itself as Reconciling in Christ. Recently the Bishop and a group of synod leaders formed a new team that will help congregations live more fully into this RIC identity. The group is called the *Synod Table for Community Accompaniment*.

**Source:** <http://www.reconcilingworks.org>

Submitted by taskforce member Randi Beyerl



## Fair Trade Coffee

Stop by the **Fair Trade Coffee** display in the gathering area to check out the varieties of ground and whole bean coffee and tea available for purchase. You can also sign up to sponsor the coffee on an upcoming Sunday. For \$15 you can help offset the cost of the coffee served during fellowship time and celebrate an occasion such as a birthday, anniversary, or the memory of a loved one.

# Education

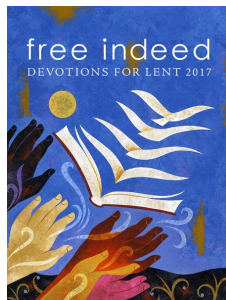
## Lenten Bible Study

Pastor Glenn will be leading a study each Wednesday beginning March 8 at 6:00 pm and Sundays at 9:15 am beginning March 5. The Book of Daniel will be our focus this year.

Daniel is a book of consolation. The message is clear: evil will not have the last word. This course provides an opportunity to ponder our calling as faithful disciples in troubling times. Additionally, each session begins and ends with a devotional component inviting participants to reflect on what they hear in the text and what the message of the text means for us in our calling to discipleship. Study guides are \$7.00. Sign up at the Lenten table in the front entry where envelopes are available for study book purchase.

## Lenten Devotions Available

This beautiful, full-color devotional takes you through Lent with daily readings from Martin Luther's Small Catechism. Each reading is accompanied by a photo, a quote to ponder, reflection, and prayer. Free Indeed invites you to reflect on



Martin Luther's guide to the basics of Christian faith during the Lenten season, and within the observance of the 500th anniversary of the Reformation. Pick up at the Welcome Desk in the entry. Large print available.



**Triennial Gathering in Minneapolis**—The national gathering of the Women of the ELCA takes place July 13-16 in Minneapolis. This is a great opportunity for women to experience outstanding speakers, dynamic worship, and to meet women from all over the country. Mount Olive already has 12 women planning to attend and there is still time to register. Registration and scholarship materials are available in the gathering area. For more information and online registration, visit [welcatg.org](http://welcatg.org) or contact Ruth Monson (507-319-0578 or [ruth.a.monson@gmail.com](mailto:ruth.a.monson@gmail.com))

**Zumbro Conference Gathering**— On April 20th, Mount Olive will serve as hosts for the Zumbro River Conference of the Women of the ELCA. The event goes from 4:45 to 8:30 pm and includes dinner, music, a speaker— Pastor Nirmala Reinschmidt, and a worship service with communion. There will be displays from a variety of organizations. Designated in kind offerings will go to Family Promise. Items being collected are: diapers (any size), baby wipes, laundry detergent, Kwik Trip gift cards, and any personal items. **Registration is \$15 and includes dinner. Due Monday, April 10, 2017.**

**Registration & Offering Checks** – make payable to SE MN Synod WELCA

Please write separate checks and indicate "registration" or "offering" on the memo line and indicate your church name and city. Mail to:

Gwen Kubista, 532 3rd Street NW; Blooming Prairie, MN 55917

**Monthly Bible study leaders will meet with Pastor Glenn in the front conference room on March 7 at 5:30 pm.**

**Please RSVP to Pastor Glenn ([glenn@molive.org](mailto:glenn@molive.org)).**

## Metamorphosis Winter Recap

Our winter series for Metamorphosis is always **Proclaim Justice**. This year, we studied the 10 commandments and thought about the way God seeks to make things right in our lives and in our world. From the first three commandments that attune us to God's presence and the other commandments that attune us to our neighbors and our most important relationships, we learned that God's presence continues to go with us in our lives of faith. This coming Spring, beginning April 26th, we will be **Proclaiming Community** as we learn what it means to live in this way together. Join this intergenerational group on Wednesday evenings for a meal, faith discussions, and learning together as a community. Contact Pastor Paul with any questions, [paul@molive.org](mailto:paul@molive.org) or 288-1580 ext. 205



## Second Sunday Service

On the Second Sunday of each month, we are focusing our education hour on service. This month, on March 12th beginning at 9:15, will be focusing on completing Personal Care Kits to be distributed through LWR. Personal Care Kits are shared with people who have lost everything from a natural disaster or life-threatening violence. It's not too late to pick up a Personal Care Kit card at the LWR table in the Gathering Area to donate an item for a kit. **Give hope through a bar of soap!** Return items for kits by March 5<sup>th</sup>. All ages are encouraged to participate.

**Thank you!**



Lutheran World Relief  
SUSTAINABLE DEVELOPMENT. LASTING PROMISE.



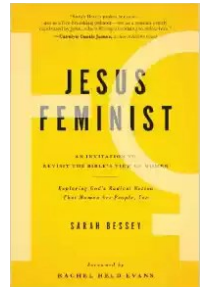
Service Day February 12, 2016

In February, blankets were tied for the Hugs From Hunter Foundation and school kits were made to take to Colombia.

**Faith Seeking Understanding** reads and shares conversations about a variety of books on theology, religion, spirituality and Christianity and our changing church. FSU meets on the first Tuesday of the month at 6:30 pm. All are welcome. If you have any questions, please contact Jody Myers at [jodyjpmymers@gmail.com](mailto:jodyjpmymers@gmail.com).

**March 7 - *Jesus Feminist: An Invitation to Revisit the Bible's View of Women*** By Sarah Bessey

Gender roles have been debated for centuries, and now Sarah Bessey offers a clarion freedom call for all who want to realize their giftedness and potential in the kingdom of God. Through a thoughtful review of biblical teaching and church practices, Bessey shares how following Jesus made a feminist out of her.



## Fun In Serving Him- A service group for 1<sup>st</sup> through 5<sup>th</sup> graders



We had a great time this winter. We made treats for the firefighters, hammocks for cats, made encouragement cards for the John Adams kids and packed backpacks with food for them. Please join for us for spring quarter beginning April 26th as we hope to do outdoor service projects for the church and the community. Watch the April *Messenger* for more information. If you have any questions, please contact Carrie Fletcher at [carrie@molive.org](mailto:carrie@molive.org)



Call (507) 346 - 2494 with any questions or concerns. **Register for Summer Camp Now and Save 10% with code EARLY17**  
**Register siblings for camp and Save 15% with code SIBLING17**

# Service

## Lenten Collection Has Begun

Our annual collection for The Channel One Food Shelf begins Ash Wednesday and ends on Palm Sunday. This drive provides much needed food and supplies for families in our area. Mount Olive has strongly supported the effort in past years with one grocery bag or a \$10 donation from each of our church families. There will be tables in the church entry for you to place your grocery bag and envelopes available for monetary donations. Please make sure that all items are non-perishable and that they are not close to expiring. The following is a list of suggestions from Channel One on their most needed items:

If you have any questions, please contact: Kathleen Haase at [haasekat84@gmail.com](mailto:haasekat84@gmail.com)



Canned Meats and Peanut Butter	<b>Special dietary need items such as:</b> <ul style="list-style-type: none"> <li>• Gluten free</li> <li>• Low sodium</li> <li>• Low sugar</li> </ul>	<b>Personal Care Items:</b> <ul style="list-style-type: none"> <li>• Shampoo and soap</li> <li>• Deodorant</li> <li>• Toothpaste</li> <li>• Diapers</li> <li>• Toilet paper</li> <li>• Feminine hygiene products</li> </ul>
Canned Fruits and Vegetables		
Soups and Boxed Meals		
Rice and Pasta		
Flour, sugar, oil		

## Mount Olive receives Social Justice Award

On February 23<sup>rd</sup> in the rotunda of the State Capitol in St. Paul, members Brad Natzke and Eva Colligan, along with Pastor Glenn, accepted, on behalf of the congregation, the 2017 Interfaith Community Social Justice Award from the Joint Religious Leadership Coalition (JRLC) of Minnesota. Every year the JRLC board recognizes one outstanding ministry in the state to receive this prestigious award for doing the work of social justice in their community. The fact that Mount Olive, though not a large congregation, works arm-in-arm with 12 different ministry partners in Rochester on behalf of hungry, homeless, incarcerated, marginalized and poor persons, as well as being active in interfaith dialogue, was a major factor in our selection. Congratulations to all Mount Olive members and we pray this award may spur us on to even more enthusiasm in this work of social justice.



CFR is a non-profit, volunteer-led organization that provides free meals to hungry people to eat at home or elsewhere. The food they distribute is donated by restaurants, cafeterias, businesses and grocery stores. C.F.R. is expanding operations to the

NW quadrant of the city. They will be located next to the new Gage East Apartments. Mount Olive will be participating in this ministry on a monthly basis. It was decided that we will staff the NW facility once a month, on a Monday. We will need to have 5-10 volunteers each month. The hours would be 2:30 to about 6:30. Someone from the C.F.R. organization will be there to help to us. We hope to begin this ministry in March. Please watch for a sign-up in the gathering area to help this very valuable and needed ministry opportunity. If you have any questions, please feel free to contact Pastor Glenn at [Glenn@molive.org](mailto:Glenn@molive.org) or Carrie Fletcher at [carrie@molive.org](mailto:carrie@molive.org).



Mount Olive will be hosting homeless families participating in **Family Promise** for 3 more weeks in 2017, please mark your calendars with these dates:

**March 5-12**

**Nov 19-Dec 2nd  
(2 weeks back to back)**

Sign up in the gathering area or online using the link from the Mount Olive website to help during host weeks.

## Next Chapter Ministries

### Restoration Celebration

**March 17, 2017, 6:00pm**

### International Event Center

Since 2000, Next Chapter Ministries has been hard at work building relationships with people in our community whose lives and families have been devastated by crime. Join us to hear some of their stories and how their lives have been transformed and restored by Christ's gift of salvation.

This year's event will be MC'd by KAAL News Anchor, Betsy Singer. Also, new for this year is a Silent Auction with many great items to support the ongoing work of Next Chapter Ministries!

Mount Olive has reserved some seats by sponsoring a table. Additional tickets are \$25 per seat. All tickets will be held on will-call and check-in required at the door on day of the event. Go to <http://nextchapterrochester.org/upcoming-events/> to order tickets.

9



## Backpacks for John Adams

Drivers and Packers are needed for this food program for students at John Adams Middle School.

The schedule is always posted on the Volunteer Sign-up Table in the Gathering Area. Select the date/time you will perform one or more of these tasks. Contact Warren Kemplin at 254-4932 with questions or for a replacement driver or packer should you have a conflict.

## Dorothy Day House Volunteers Needed!

Come and serve at the Dorothy Day Hospitality house in downtown Rochester! Volunteers are needed for April 7th and May 5th. The time commitment is 1.5-2 hours. Serve a delicious meal (anything goes) to the residents- about 25 guests. Past meals have included chili, lasagna, taco bar, etc. It is a great opportunity for a family or a group. Join in the fun! Sign up on the Dorothy Day Volunteer calendar located in the gathering area or contact Anna Strand @617-899-2484 or [annabstrand@gmail.com](mailto:annabstrand@gmail.com)



Thanks to all who participated in the Alternative Learning Center (ALC) collection in December and January! We gathered an abundance of winter wear and personal care items which were gratefully accepted by the school.

Now, through a Community School Grant, a staffed family resource room will open in the ALC this month.

This will provide better coordination of resources to meet student needs. The room will be stocked with clothing, food, household and hygiene supplies. Gage Elementary School was also designated a "Community School" this past fall. As a congregation, we won't be collecting items for these schools, but check their websites if you want to help out.

Mount Olive's support of our neighborhood schools has been very strong with WELCA's designation of the "Mitten Tree" items going to these schools. We have also responded to requests from these schools' social workers when a student needs a pair of gym shoes or snow pants, etc. If you'd like to get a one time call to purchase a new or gently used item for a particular child, just add your name and contact # to the "Neighborhood Schools" sheet in the gathering area.

## Mount Olive Quilters

**Thursdays at 9:00 am**

**You are invited each week to enjoy quilting and fellowship.**

**No quilting experience needed!**

## Mount Olive Women's Day of Service

**Saturday March 11th, 9:00 am.**

All women and girls grades 6-12 are invited to participate in this 2nd annual event for service, fellowship and growth. Look for more details and sign up for a variety of projects. Bring your sewing machine, scissors, or knitting needles. Contact Sherry Sanden Will at [sher05@charter.net](mailto:sher05@charter.net) or 507-281-0457 or Jene Bodenstener at 507-287-0257 or [jbode6@me.com](mailto:jbode6@me.com) with any questions.



## Prayer Shawl Ministry

**Tuesday, March 14th at 9:00 am**

All knitters and crocheters are invited. Yarn, treats, guidance, wisdom, support, and humor are shared! Gather in the front conference room.



# Fellowship

## Adventure Club Activities in March

Erin Sinnwell and Rachel Carlson will be organizing Adventure Club activities for Spring and Summer. See the complete list of events for spring and summer in the gathering area.



**March 3rd-Ice Hawks Hockey game!** Dress warmly and join the group for this family friendly outing at the Rochester Rec Center on Friday, March 3rd. The game starts at 7pm and tickets are \$9 for adults, \$7 for seniors/students, children 5-10 years are \$5 and 4 years and under are free. There will be no sign up for this at church; just come if you are able and buy tickets at the door. There will be a section saved for the

Mount Olive group to sit in.



**March 12-Movie Night- *The Shack*** *A grieving man receives a mysterious, personal invitation to meet with God at a place called "The Shack."* Sign up in the gathering area for this adult activity. The movie, based on a popular book of the same name, is at Paragon Chateau theater and is \$10. (exact time to be decided once movie times are available at the theatre) Erin will buy the tickets ahead of time so we can all sit together. We will go to Glynner's afterwards for dinner and discussion about the movie

(and to compare to the book for those who have read it)



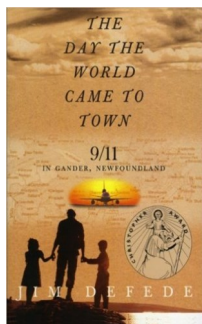
## Family Friendly Fellowship Dinner

Please join the Family Fellowship Group for a pot-luck Mexican Dinner, songs, games and a craft on Sunday evening, March 19th in the fellowship hall at Mount Olive from 5-8pm. Supper will be served at 5:30pm. Sign up in the gathering area.

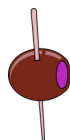


## Monday Book Group

The Monday Book Group will be meeting March 13 at 6:30 pm in the library. We will be discussing *The Day the World Came to Town* by Jim DeFede. This is the story of when thirty-eight jetliners bound for the United States were forced to land in Gander, Newfoundland, on September 11, 2001, due to the closing of United States airspace. The citizens of this small community were called upon to come to the aid of more than six thousand displaced travelers.



## Ripe Olives meet at Mount Olive



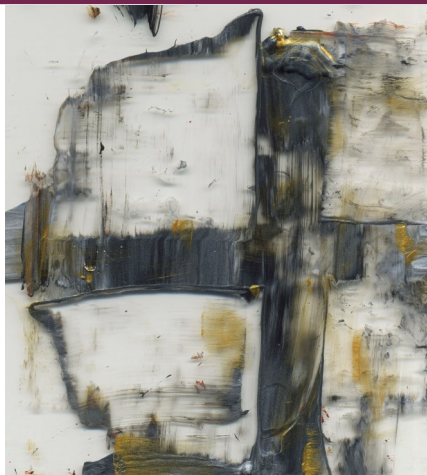
**Friday, March 10th at 9:30 am**

Ripe Olives is a group of Mount Olive's seniors (60+) who meet monthly for fellowship, food, and learning. This month the group will meet at Mount Olive for a presentation by Mount Olive member and Post Bulletin columnist, Loren Else. Loren will be talking about how he puts together his columns each week as well as sharing general information about the newspaper industry. Everyone is welcome! Sign up in the gathering area. Coffee and treats will be provided.





# Worship



## Lent is not a season of Alleluias

On the Sunday before Ash Wednesday we will once again “hide the Alleluias” during the Children’s Moment in worship. This is the sign to us that the season of Lent is about to begin. In the season of Lent we refrain from singing alleluia, not because we have nothing to praise God for, but because we want to focus ourselves clearly on the suffering and death of Jesus, and be drawn more deeply into our understanding of what that means for us.

Lent is also traditionally a time to carve out more time for worship and for spiritual formation, as well as a time when we go beyond our regular offerings to give additional gifts to support our neighbors in need. To help us accomplish all these things, you are invited into the following Lenten disciplines this year:

- Attend mid-week services at noon or at 7:00 pm each Wednesday and reflect with other worshippers on Luther’s Small Catechism, a treasure of Lutheranism.
- Spend time with other worshippers enjoying a simple soup meal each Wednesday at 12:45 following worship, or at 5:45 prior to evening worship. Offerings collected will support ELCA World Hunger.
- Study the Old Testament book of Daniel with Pastor Glenn each Wednesday at 6:00 pm or Sunday at 9:15 am.
- Have a daily devotional time using the personal guides provided for your use.
- Bring a gift of non-perishable food for Channel One and leave it in the blue barrel in the church entryway as you come to worship. The children will be bringing it into the sanctuary each Sunday during Lent.
- Make a special cash gift to Channel One during the season of Lent.

We pray that your silent Alleluias will resound within you as you discover the riches of this season.

## Welcome New Members!

The following people were welcomed into membership at Mount Olive on February 19. Please introduce yourself and give these new members a warm welcome to Mount Olive:

- †Walt and Mary Allen
- †Andy Chinn
- †Dan Meyer and Marilyn Austin
- †Craig Nelson and Caitlin Krenz and Cameron
- †Megan Plapp
- †Dan Wethington



## Ash Wednesday is March 1

The Season of Lent begins on Ash Wednesday with worship at noon, 5:00 pm, and 7:00 pm.

This unique service includes an extended time of confession where, following each petition, we cry out, “Have mercy on us, O God.” Prior to announcing the absolution, the presiding minister invites all worshippers to come forward to receive the Imposition of Ashes. As the sign of the cross is imposed on our foreheads, the minister says, “Remember that you are dust, and to dust you shall return.” This serves as a stark reminder that “only by the cross of our Lord Jesus Christ are we given eternal life.” You are invited to join in this important first step in following our Suffering Savior towards Palm Sunday, Maundy Thursday, and Good Friday. Following the noon service and at 5:45 pm (between services) a simple soup meal will be served in the Fellowship Hall.



## Sanctuary Flowers for Easter

Watch for the opportunity to order flowers through the first week in April. Follow the directions on the order envelopes in the front entry. The flowers are yours to take after the 10:30 Easter Sunday service or you may leave them to brighten the sanctuary.



Mount Olive Lutheran Church

2830 18th Avenue NW

Rochester, MN 55901

## Welcome to Lent

Ash Wednesday  
March 1

Noon     Worship with Imposition of Ashes  
12:45 pm Soup Luncheon  
5:00 pm   Worship with Imposition of Ashes  
5:45 pm   Soup Supper  
7:00 pm   Worship with Imposition of Ashes

Wednesdays  
beginning  
March 8

Noon     Lenten Service with musical liturgy  
12:45 pm Soup Luncheon  
5:45 pm   Soup Supper  
6:00 pm   Bible Study: *Daniel*  
7:00 pm   Lenten Service with musical liturgy

Saturdays

5:00 pm Worship

Sunday  
Mornings

8:00 am Worship  
9:15 am Bible Study: *Daniel*  
10:30 am Worship