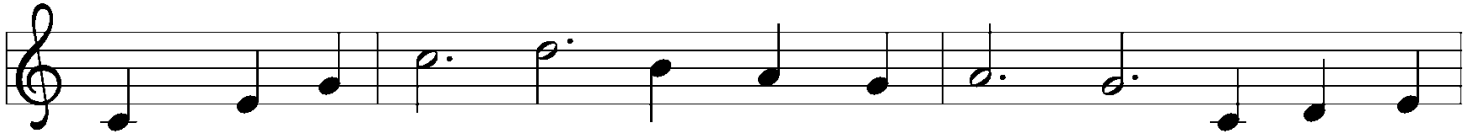


# July 25 Tailgate Worship Song Sheet

## GATHERING HYMN

### "Praise and Thanksgiving"



1 Praise and thanks-giv - ing, God, we would of - fer for all things  
2 God, bless the la - bor we bring to serve you, that with our  
3 Fa - ther, pro - vid - ing food for your chil - dren, by Wis - dom's  
4 Then will your bless - ing reach ev - 'ry peo - ple, free - ly con -



liv - ing, you have made good: har - vest of sown fields, fruits of the  
neigh - bor we may be fed. Sow - ing or till - ing, we would work  
guid - ing teach us to share one with an - oth - er, so that, re -  
fess - ing your gra - cious hand. Where you are reign - ing, no one will



or - chard, hay from the mown fields, blos - som and wood.  
with you, har - vest - ing, mill - ing for dai - ly bread.  
joic - ing with us, all oth - ers may know your care.  
hun - ger; your love sus - tain - ing show - ers the land.

## HYMN OF THE DAY

## “Build a Longer Table”



1 Build a long - er ta - ble, not a high - er wall,  
2 Build a saf - er ref - uge, not a larg - er jail;  
3 Build a broad - er door - way, not a long - er fence.  
4 When we lived as ex - iles, ref - u - gees a - broad,



feed - ing those who hun - ger, mak - ing room for all.  
where the weak find shel - ter, mer - cy will not fail.  
Love pro - tects all peo - ple, spar - ing no ex - pense.  
Christ be - came our door - way to the reign of God.



Feast - ing to - geth - er, strang - er turns to friend,  
For an - y place where jus - tice is de - nied,  
When we em - brace com - pas - sion more than fear,  
So must our ta - bles wel - come those who roam.



Christ breaks walls to piec - es; false di - vi - sions end.  
Christ will breach the jail wall, free - ing all in - side.  
Christ tears down our fenc - es: all are wel - come here.  
None can be ex - clud - ed; all must find a home.

## THE LORD'S PRAYER

**P:** Gathered into one by the Holy Spirit, let us pray as Jesus taught us.

**C:** **Our Father, who art in heaven, hallowed be thy name,  
thy kingdom come, thy will be done, on earth as it is in heaven.**

**Give us this day our daily bread; and forgive us our trespasses,  
as we forgive those who trespass against us;**

**and lead us not into temptation, but deliver us from evil.**

**For thine is the kingdom, and the power, and the glory,  
forever and ever. Amen.**

**SENDING HYMN**

**“Let Us Talents and Tongues Employ”**



1 Let us tal - ents and tongues em - ploy, reach - ing out with a shout of joy:  
3 Je - sus calls us in, sends us out bear - ing fruit in a world of doubt,



bread is bro - ken, the wine is poured, Christ is spo - ken and seen and heard.  
gives us love to tell, bread to share: God (Im - man - u - el) ev - 'ry - where!

*Refrain*



Je - sus lives a - gain, earth can breathe a - gain, pass the Word a - round: loaves a - bound!

**DISMISSAL**

**P:** Go in peace. You are the body of Christ.

**C:** Thanks be to God.

**Welcome, Worship Guests!**

Thank you for joining us for worship today. You are always welcome. You may also visit our website, [www.molive.org](http://www.molive.org), to learn about other ways you can be part of life at Mount Olive. You can sign up there to receive our weekly email updates which contain information about upcoming events as well as links to the weekly online services, newsletters, and lots more.



## Miriam Hanson preaching August 1

Our seminarian, Miriam Hanson, newly graduated from Trinity Lutheran Seminary in Columbus, Ohio, will be our guest preacher next Sunday, August 1. Miriam will update us that day on her plans to attend Princeton Theological Seminary to receive additional training in theology and environmental studies. In order to show our support for Miriam, we invite you to make a gift to the Keith and Mary Beaver Seminary Scholarship Fund, any time between now and August 1. We hope to raise \$10,000 to support Miriam in this new venture. Envelopes are available on the Welcome Desk. Thank you.



## Mount Olive Fans to attend Minnesota Twins Game

There's still room on the bus to Target Field to see Twins play on Sunday, **August 15<sup>th</sup>** at 1:10 pm. We will leave the Mount Olive parking following indoor worship at 10:45 am. For both a great seat in the first rows of Section 138 in right field and a seat on a comfortable coach bus, the cost is \$45. **All reservations need to be made and paid for by Wednesday, July 28.** A sign up sheet and payment envelopes are available in the church entry.

## Olive Branch at Berne Pizza Artisan Market

Did you know that Olive Branch has an Artist Collective? We are a group of creative people who enjoy being creative in fellowship with one another. You can visit us and peruse our art at the Berne Wood-Fired Pizza Artisan Market Night on **August 4, 2021, 4:30 – 8:00 pm**. This is a wonderful promotional opportunity for Olive Branch and we will have wall art and greeting cards for sale. There will also be live music and wood-fired pizza, so bring your lawn chairs and plan to stay for the evening. For more information on the concert or to pre-order pizza: <https://www.bernepizza.org/concerts>

## Youth Trip Departed Saturday

On Saturday, Pastor Luke, chaperone Kris Liedtke, and 18 high school youth embarked on a great adventure to Rainbow Trail Lutheran camp in the mountains of Colorado August 24 to July 31. They will tell the congregation about their experiences in worship on August 8. Please keep them in your prayers for a meaningful week and safe travel.

## Offerings

Thank you for the ways your financial gifts have sustained Mount Olive and our ministry partners during the last year! If you'd like to make an offering, click on the green "Donate Now" button at the bottom of the church website homepage- [www.molive.org](http://www.molive.org), drop in the office drop box, or simply put a check in the mail to the church office: Mount Olive Lutheran Church, 2830 18th Ave. NW, Rochester, MN 55901.

## Congregational prayers for healing and comfort ...

- ◆ Mount Olive members and friends who are ill, grieving, or recovering from surgery.
- ◆ All who are impacted by COVID-19 and the essential workers who continue to respond to this crisis with deep courage and compassion.
- ◆ All who are suffering, those living in fear, and all who have experienced racial violence or discrimination. May we be open to deep learning and discomfort so that our words and actions dismantle racism, not perpetuate it.
- ◆ All homebound members
- ◆ For our companions in ministry in Kijota, Tanzania and Bogota, Colombia. May our partnership expand our appreciation for the work of the church in the world.