

# THE

# Messenger

July 2019

MOUNT OLIVE LUTHERAN CHURCH • ROCHESTER, MINNESOTA • 507-288-1580 • MOLIVE.ORG

*A Congregation of the Evangelical Lutheran Church in America*

Major changes are underway at the Janke/Hollander residence. Adie is excited to tell anyone who will listen the following things:

- ◇ "I'm going to preschool, soon I will be an adult."
- ◇ "I used to live in Canada, now I live in the red house."
- ◇ "We have a new church where Daddy works. Now Mommy works there too."

Which leads me to why I get to write the front page article in *The Messenger* this month. After a lot of paperwork and even more waiting, the day has finally arrived! Luke and I travelled to the US Consulate in Montreal for my Visa interview on June 11. The interview turned out to be the easiest part of the whole process and I arrived in Rochester on June 14 with permanent resident status.

This means I am saying goodbye to those leisurely Sunday mornings where Adie and I could stroll in during announcements to participate in worship with the second service crowd. It was a joy-filled experience to soak in the music, liturgy, and preaching and begin to feel part of this community. And I couldn't be more thrilled for the opportunity to begin my work among you.

For months I have been thinking about the alternative worshipping community we are being called to develop and support. To say I'm excited would be a huge understatement. I know some of you feel the same way, so we need to get together as soon as possible! Creative brainstorming is one of my favorite things, especially with a pack of multicolored pens. Thankfully the mutual ministry committee included some in my welcome basket!

Honestly, this is such a great place to be.

Pastor Lisa Janke



*Lisa and Adie at the Winnipeg Pride Parade, June 2019*



## Inside This Edition:

Congregational Life  
page 2

Worship  
page 3

Service  
pages 4-5

Education  
pages 8-9

Fellowship  
pages 10-11



## Welcome Lisa and Luke!

Please come to receptions following all worship services the weekend of July 13/14 to extend a warm welcome to Pastor Lisa Janke and Luke Hollander! Enjoy some strawberry shortcake and let Lisa, Luke, and their daughter, Adie know how thrilled we are to have them together among us.

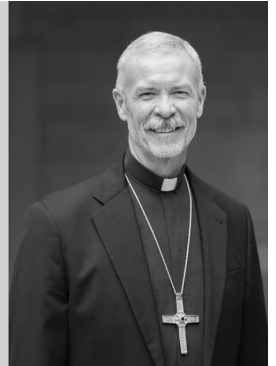
## SE MN Synod Assembly 2019 Elects a New Bishop

Pastor Regina Hassanally, currently serving at St. Luke's Lutheran Church in Goodhue, was elected bishop of the SE MN Synod on June 1 at the Synod Assembly. She was elected on the fifth and final ballot with 237 votes out of 443 cast. She received her Bachelor in Arts from Northwestern College, Orange City, Iowa and her Master of Divinity from Palmer Theological Seminary in Wynnewood, Pennsylvania, with her Lutheran studies at Luther Seminary in St. Paul. Bishop-elect Hassanally will lead the 171 congregations of the synod along with other new staff members, since 3 out of 4 of the current assistants to the bishop have announced their intention to either retire or seek new areas of service. We ask for prayers for our bishop-elect as she begins her ministry among us. In other action at the assembly, Mount Olive member, Anya Liedtke-Quick was installed as a youth representative on the SE MN synod council. Congratulations Anya!

### A RETIREMENT RECEPTION

*For Bishop Steven Delzer*

**SUNDAY  
AUG 18  
2-4:30PM** **OUR SAVIOR'S  
FARIBAULT  
1207 Prairie Ave SW**



## 60<sup>th</sup> Anniversary Fund, Concentric Circles of Blessing, has Begun

Mount Olive's 60<sup>th</sup> Anniversary celebration has begun! We will be 60 years young on March 12, 2021, but between now and then we want to raise significant dollars for our newest ministry initiatives and some of our most important ministry partners. Our goal is to raise \$120,000 each year (2019-2021), so

that our 60<sup>th</sup> Anniversary is truly a celebration of blessing for all. Be sure to find the brochure and letter sent to you, detailing the goals of this fund, and then fill out that pledge sheet and return it to the church office at your nearest convenience. We exist for the sake of the world, and as we have been blessed, so we will be a blessing to others.

## Family Circle Learning Center Prepares to Open

A lease agreement has been signed between Families First of Minnesota and Mount Olive allowing Families First to begin operating licensed day care programming during the week in our Sunday School Classrooms. They have begun remodeling and aim to be ready to open October 1. Childcare for families is highly needed in our community; Mount Olive is providing a very affordable space so that this programming can get up and running. The day care opportunities will be for infants, toddlers and preschoolers. They will start with one classroom per age group and expand as needed. Families First will also use one of the classrooms for office space. Part of their mission is to provide an example of, and teach others, how to create partnerships and get more services like this in Rochester and other communities. If you have questions about this partnership, please ask Bill Hollander, Church Administrator. For more information about Families First programming or childcare registration, visit [www.familiesfirstmn.org](http://www.familiesfirstmn.org) or call 507-287-2020.

## Sanctuary Projection System

The new projector and screen have been installed in the sanctuary and are functional! Sim Sound of Winona has completed the installation of the new Audio/Visual equipment. Along with the projector and screen is a new, digital camera that is broadcast into the Gathering Area making the quality of picture far better than we have had in the past. If you have any questions about our new capabilities, please ask Bill Hollander, Church Administrator.



## Pastor Lisa to be Installed August 11

Way back on January 20<sup>th</sup> we voted to call Pastor Lisa Janke as our Associate Pastor of Outreach, and her husband, Luke Hollander, as our Director of Children, Youth and Family Ministries. While Luke has been in place since February, Pastor Lisa was prevented from starting until she received her “Green Card” from U.S. Immigration Services, since she is a Canadian citizen. Finally, in late June, Lisa was granted her Green Card and has now begun her ministry amongst us. The formal installation for Pastor Lisa will be Sunday, August 11, with a member of the SE MN Synod staff present to do the installation. Also, on that day, all rostered leaders, retired or active, are invited to be participate in the laying on of hands. Welcome, Lisa!

## Summer Music Opportunities

Do you sing? Do you play an instrument? Would you like to share your musical gifts in worship this summer? Please contact Travis Beck if you would like to provide special music for worship and he will help you get on the schedule—[travis@molive.org](mailto:travis@molive.org) or 288-1580 ext. 203.

## Mount Olive Hosts South Sudanese Network

July 18-20 Mount Olive will host the South Sudanese Network Gathering. This is a gathering of ELCA South Sudanese leaders throughout the United States, leaders from their host congregation and/or synod, and global leaders from ELCA Churchwide.

Their worship service on Friday, **July 19** at 7:30 pm is open to everyone. Watch for more information coming in weekly bulletins about this special service. Contact Nancy Britson if you would be interested in helping to host these guests as they meet at Mount Olive - [nancy@molive.org](mailto:nancy@molive.org) or 507-288-1580 ext. 202

## Outdoor Service on the Patio

Although a rainy Sunday prevented the Sunday service from being held outdoors, the weather cooperated for a lovely Saturday evening service on the patio on June 22.



## Summer Volunteers Needed

During the busy summer months, volunteers are still needed for all of our worship services! Mount Olive uses an online program called Sign Up Genius to schedule volunteers. Sign up to serve at a day and time that works for you. You will receive an automatic reminder as well as additional details and directions from Nancy Britson, Director of Congregational Life. The Sign Up Genius links are available via invitation and are also accessible from the Mount Olive website, [molive.org](http://molive.org) on the Service tab. If you “don’t do computers”, you may also call Nancy with your availability, 288-1580 ext. 202. Please consider helping out as you attend worship this summer!

## Family Promise

Keep your eyes open for the Family Promise sign-up in the entry way beginning July 13. Our next host week for homeless families is August 11-18. Thank you to all the volunteers that helped during our June host week. The time you give is so greatly appreciated by the families we serve. FamilyFest, a fundraiser to support Family Promise, is August 10 at Good Shepherd Lutheran Church. See more information to the right. Please contact Erin Sinnwell if you are willing to help run a carnival game for this event— [etracy515@hotmail.com](mailto:etracy515@hotmail.com).

## Food For Friends

Thank you to everyone who volunteered their time to pick up food, pack bags for students and deliver the food to John Adams Middle School. With your help, young people in our community are getting the nutrition they need to be successful in school. A special thank you to Mark Schultze, Warren Kemplin, and Carrie Fletcher who organized the volunteers during the 2018-2019 school year. Thanks also to the Metamorphosis youth and their parents who helped pack the 20-50 bags needed during many weeks of this past school year.



## School Supply Drive

Beginning July 13- Aug 11, Mount Olive will be collecting school supplies for youth sponsored by Lutheran Social Service. Supplies needed include: \*Backpacks for older youth (need 50), backpacks for elementary youth, sturdy binders, glue bottles, glue sticks, kid's scissors, colored pencils, highlighters, erasable markers w/erasers, and Kleenex boxes. Place your items in the wooden box in the entry area. Any extra items collected, beyond LSS's needs, will go to The Alternative Learning Center (ALC).

## March Food Drive Results

The results are in from Minnesota FoodShare regarding the state wide March Food Drive! Drum roll please. With 1,263 pounds of food and \$2,322 in cash donations, Mount Olive Lutheran Church was ranked #6 Top Supporter in 2019. That's up from #8 in 2018! Across Minnesota, over 13 million combined dollars, pounds of food and food shelf items were raised during this campaign. Thank you for your part in helping Mount Olive reach their goal of breaking last year's ranking, and more importantly for all your donations that helped to restock our local Channel One Food Shelf.

## Dorothy Day Volunteers Needed

Volunteers are needed to serve the evening meal the first Friday of each month for guests staying at the Dorothy Day Hospitality House, a temporary homeless shelter in downtown Rochester. Volunteers provide and share a family-style meal with the guests in the home's dining room. We are currently in need of volunteers for **August 2 and September 6**. A sign up sheet is on the cabinet in the Gathering Area. Contact Jene Bodensteiner at [jbode6@me.com](mailto:jbode6@me.com) with questions or to volunteer.



**FamilyFest – A Promise Picnic**

Join us for a fun outdoor fundraiser to support Family Promise Rochester.

This celebration of family will have fun carnival games & activities including a bounce house/obstacle course, there will be great food and LIVE MUSIC - featuring the **Teddy Bear Band & The Resistors**. Bring blankets and folding chairs and enjoy some family friendly music!

**Saturday, August 10<sup>th</sup>**  
**3 to 8 pm**  
**Good Shepherd Church**

Show at 5pm – kids remember to bring your teddy bear!

**Family Promise of Rochester**

**FamilyFest A Promise Picnic**



## Project Comfort Coffees

Following services on July 20/21 Ruth Circle members will serve cookies, cheese and crackers with coffee and lemonade and will accept a free will offering to support the Lutheran World Relief Quilt and Shipping Fund. All offerings collected will go directly to LWR to help defray the cost of shipping the care kits and quilts to people in need around the world. Checks can be made out to Mount Olive with "Project Comfort" on the memo line and given the day of the coffee or during worship at any time. Your support is greatly appreciated.



## God's work. Our hands.

*God's work. Our hands.* is Sunday, Sept. 8. This day is celebrated throughout the Evangelical Lutheran Church in America (ELCA) – one church, freed in Christ to serve and love our neighbor. Service activities offer an opportunity for us to explore one of our most basic convictions as Lutherans, which is that every act of service flows freely from a living, daring confidence in God's grace. Please contact Sherry Will at [sherry@molive.org](mailto:sherry@molive.org) if you have a service project idea and/or would like to serve as a project leader. Our goal is to have 12 or more projects and to get every member of Mount Olive involved in service on that day from the youngest to the oldest.



**God's work.**  
**Our hands.**



### T-shirts Available

Everyone is encouraged to wear their gold, *God's Work. Our Hands.*, T-shirts to worship and work on September 8. If you didn't get one in previous years, order now from the table in the front entry beginning July 20. **The**

**deadline to order is August 4.** The shirts are sized from child's small –adult XL (\$8), Adult 2XL (\$10), Adult 3XL (\$11). Payment is required at time of order. Contact Sherry Will with any questions at [sherry@molive.org](mailto:sherry@molive.org).

### SSOM Team Meeting

Attention all Service and Social Outreach Ministry (SSOM) team members, the next SSOM planning meeting is **Tuesday, July 16, 6:30 pm-8:00 pm** in the Mount Olive Library. All team members are asked to

## Victory Gardens Growing

The Mount Olive Victory Gardens, located on the east side of the church yard are flourishing. Strawberries are being harvested now, the garlic will be ready in early July, and the rest of the produce is off to a great start. The produce is donated to Community Food Response or Families First. If you are interested in joining the team to tend the gardens this summer, please contact Lori Kuhlmann-Liebfried at [lorikl@hotmail.com](mailto:lorikl@hotmail.com).



## Service Opportunities

Are you looking to participate in a service project? Check out the sign-up sheets in the Gathering Area for the Dorothy Day House and Community Food Response (CFR). Are you a first time volunteer? If so, put an asterisk by your name when you sign up, and the project coordinator will pair you with an experienced volunteer.

## Holden Village Gives Blessings Galore

If you were to ask any one of the 19 members of the Mount Olive team that went to Holden Village, June 7-16, you would hear one basic response: We were blessed! We were blessed with wonderful weather (sunny in the 80's during the day, cool at night) spent in this unique retreat center in the Cascade Mountains 100 miles east of Seattle, Washington. There was weaving and pottery, hand crafts and tie-dying.



There were classes on theology, music, the environment, and Holden Village operations and history. There was wonderful food and conversation, with ample amounts of each. There were hiking trails galore, some only an easy walk from the Village, and others, miles up to the surrounding mountain passes and lakes. And sometimes there was simply a chance to sit and read or take a nap. One of the highlights for many in the group was doing Holden Evening Prayer at Holden Village, where it was first composed. What a treat!



## Mount Olive Women of the ELCA News

Many thanks to Mount Olive's outgoing Women of the ELCA president Renee Schaefer for her leadership this past year!

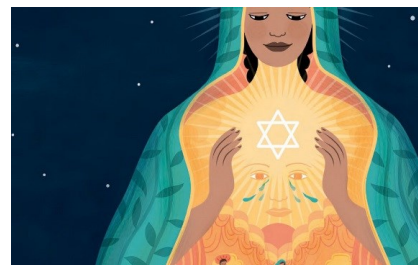
We also give thanks in advance to our newly elected board; Regina Seabrook - President, Jolene Baker - Treasurer, and Gloria Schad - Secretary. These women take office on July 1. A Co-President is still needed, please contact any member of the board to learn more about this position.

Women's small group studies for 2019/2020 will continue to be from *Gather Magazine*. Two copies will be available in the church office. A subscription to the magazine, which includes a variety of resources and articles for Christian women in addition to the study, is suggested for small group participants. Go to the Gather Magazine [website](#) or call (844)409-0576 to start your subscription. If you are interested in joining a women's small group this fall, please contact Nancy Britson ([nancy@molive.org](mailto:nancy@molive.org)) or Regina Seabrook ([rseabroo@gmail.com](mailto:rseabroo@gmail.com)). Watch for a sign up table in the church entry later this summer. There is always room in the circles for new friends!



## Women's Summer Bible Study

For the months of July and August, a women's Bible study will continue on the 3<sup>rd</sup> Wednesday of each month at 6:30 pm. All women, regardless of their membership in a circle, are welcome to attend. The study, entitled "Lessons from Esther", is available for free from the *Gather Magazine* website. Copies of all three studies will also be available at church. Look for the basket on the Gathering Area sign up cabinet. We hope to see you for the next studies on Wednesdays, **July 17** and **August 21**!







Pastor Glenn and Ruth enjoy a hike at Holden Village. (above) The entire group of 19 travelers to Holden. (right)



## Faith Seeking Understanding (FSU) 2019-2020

Mount Olive's Faith Seeking Understanding book group reads and shares conversations about a variety of books and videos on theology, spirituality, social justice, and Christianity and our changing church. FSU meets on the first Tuesday of the month beginning in September at 6:30 pm. Stop by the table in the entry at church on July 13/14 and 20/21 to learn more about this group and see the book and video selections for the upcoming year. You will also have the opportunity to order this year's books. If you have any questions, please contact Pastor Lisa Janke at [lisa@molive.org](mailto:lisa@molive.org) or 507-288-1580. ext. 205.

### Good Earth Village Camp

Summer camp for school aged children continues at Good Earth Village near Spring Valley through early August. Play Day for preschoolers with an adult is **July 20**. Registration is still available! Pick up an informational brochure on the Gathering Area cabinet or sign up online at

[goodearthvillage.org](http://goodearthvillage.org).

Call 507-346-2494 with any questions or concerns.

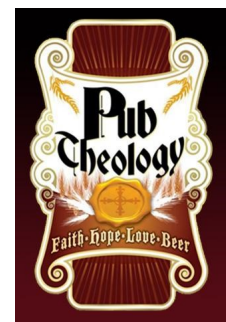


### Save the Date for Rally Sunday!

Mark your calendar for Sunday, **September 15** for Rally Sunday! Sunday School and education programming for all ages will kick off that day at 9:15 am!! Watch for Sunday School registration forms later this summer. Contact Luke Hollander if you would like to get involved as a Sunday School teacher or volunteer - [luke@molive.org](mailto:luke@molive.org).

## Pub Theology Returns to Life's Too Short

Pub Theology meets for their weekly discussions on Monday evenings, 5:30-7:30 pm at Life's Too Short Brewing. If you enjoy thinking about faith, life, and what it means to be a follower of Jesus in our world today, come join the group! Meet us at LTS Brewing at 2001 32nd Ave NW. Topics are always sent out a day ahead of time and can be found at [rochesterpublictheology.wordpress.com](http://rochesterpublictheology.wordpress.com). Come at 5:30 pm to order a beer; bring your own food or munch on free popcorn. Conversation begins at 6:30 pm. See you at the pub!



## Family Fellowship Opportunities

### July - Outdoor Movie Night

Attention families! Mark your calendars as Mount Olive is hosting an outdoor movie night on **Friday, July 12**. We will be showing a family friendly movie on the projector outside! So bring your kids, grab some chairs and blankets and don't forget the bug spray and drinks. We will provide the popcorn. We will begin with fellowship, games and snacks at 7:00 pm and start the movie as soon as it is dark enough. This promises to be a great time for the whole family!

### August - Family Camp Out

The 5<sup>th</sup> Annual Family Camp Out will be **August 2-4**. This year, the location has moved to Chester Woods Park just East of Rochester. Anyone who is not camping is welcome to make the 20 minute drive to visit for the day on Saturday, August 3<sup>rd</sup>. Large campsites, great fishing, canoeing, kayaking on the reservoir, and swimming will be among the activities. Chester Woods also has over 10 miles of awesome hiking trails and a playground for the kids. The cost for a camp site with electricity is \$65. A day pass to visit on Saturday is only \$5. There are also 2 camping cabins. Visit the park [website](#) to learn more or call 328-7350 to reserve your site and join the fun. Interested parties may contact Jason Sinnwell-[sinnweja@gmail.com](mailto:sinnweja@gmail.com) or Mike Vance-[mjvance@gmail.com](mailto:mjvance@gmail.com).



### Monday Book Group - 2019-2020 Book List and Schedule

The Monday Book Group gathers monthly beginning in September to discuss a wide variety of literature including: classics, fiction, poetry, humor, memoirs, history, mystery, Minnesota authors, and youth-inspired works. See the list of this year's selections below. Individuals are welcome to discuss one book or attend every month to discuss them all! We have leaders volunteer each month to lead the discussions. The group meets in the Mount Olive Library the second Monday of the month beginning in September at 6:30 pm. Please join us for some wonderful discussion and fun! Stop by the table in the entry at church on July 13/14 and 20/21 for the opportunity to order this year's books. If you have any questions, please contact Jodi Schoer at [mjschoer@charter.net](mailto:mjschoer@charter.net). \* Indicates Rochester Public Library book bag available

|             |  |                          |
|-------------|--|--------------------------|
| September 9 | <i>The Alice Network</i>                   | Kate Quinn               |
| October 14  | <i>The Rosie Project</i>                   | Graeme Simsion           |
| November 11 | <i>*The Bookshop on the Corner</i>         | Jenny Colgan             |
| December 9  | <i>Alice in Wonderland</i>                 | Charles Lutwidge Dodgson |
| January 13  | <i>Eleanor Oliphant is Completely Fine</i> | Gail Honeyman            |
| February 10 | <i>*The Story of Arthur Truluv</i>         | Elizabeth Berg           |
| March 9     | <i>The Last Lecture</i>                    | Randy Pausch             |
| April 13    | <i>Small Great Things</i>                  | Jodi Picoult             |
| May 11      | <i>Still Life With Bread Crumbs</i>        | Anna Quindlen            |



## High School Honkers Baseball Game

On July 10<sup>th</sup> the Rochester Honkers host the St. Cloud Rox at 6:30pm. High Schoolers are invited to come root on the Honkers and enjoy a summer night at the ball park. Please let Luke Hollander know if you will be able to join before July 4 and he will arrange for tickets. Email Luke at [luke@molive.org](mailto:luke@molive.org).



11

## Game and Pizza Night

Do you like board games? So do we! On Saturday, July 27 we will order pizza and play some excellent board games following 5:00 pm worship. This event is intended for adults and youth aged high school age and up. If you have any questions or are interested, please email Luke at [luke@molive.org](mailto:luke@molive.org).

## Mount Olive Softball Team Players Needed

The Rochester church softball league is well underway their games on Tuesday evenings at McQuillan Fields throughout July. Spectators are always welcome! Check the church calendar for game times. **A few more players, ages high school through adult, are still needed to join the team.** Please contact team manager Jason Sinnwell if you are able to help fill out the roster for the remainder of the season - [sinnweja@gmail.com](mailto:sinnweja@gmail.com).



Fellowship



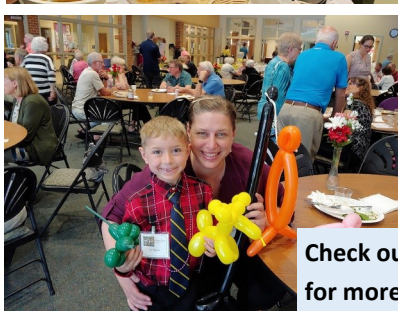
## Summer Fellowship Help Needed

Following each Sunday worship service, coffee and cookies are served in the Fellowship Hall for everyone in attendance. As regular volunteers go on vacation or take a summer break, others are needed to fill in. If you are willing to spend a few minutes serving coffee, lemonade, and cookies and cleaning up afterwards, your help would be appreciated! Please contact Nancy Britson, Director of Congregational Life for more information, look for the Sign Up Genius link on the Service tab at the Mount Olive website, [molive.org](http://molive.org), or stop by the Welcome Desk following Sunday Services to see what weekends are open.

## 60th Anniversary Kickoff Potluck Enjoyed by All!

### Lyra Baroque Orchestra

Mark your calendars for Friday, **August 9th** as Lyra Baroque Orchestra begins their 2019/2020 season. This will be the first of seven Friday evening concerts held at Mount Olive. Watch the Lyra website, [lyrabaroque.org](http://lyrabaroque.org) for more information about the upcoming season, ticket prices and season ticket availability.



Check out the church Facebook page for more pictures of the potluck!



## Mount Olive Quilters

The quilters continue to meet at 9:00 am each Thursday throughout the summer.

Anyone is welcome to join the group in the Fellowship Hall on Thursday mornings, no sewing experience is required. If you have any questions, call Elaine Monson at 272-6404

## Flowers in the Sanctuary

If you would like to provide flowers on the chancel, sign up at the Gathering Area cabinet where you will find the calendar and payment envelopes. Place orders for special occasions or in memory of loved ones. Please write your name and the designation for the flowers on both the calendar and the payment envelope. Your envelope may then be placed in the offering plate or the office drop box. Thank you!



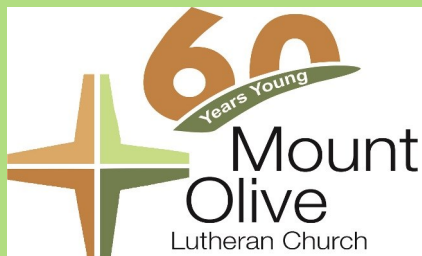
## Green Thumbs Needed

If you enjoy flower gardening, your assistance with the church's flower beds this summer would be most welcome! Help is needed with weeding, watering, dead-heading flowers, or even planting annuals. Keeping things looking nice takes many hands! Please contact Bill Hollander - [bill@molive.org](mailto:bill@molive.org) or Dallas Oudekirk - [dwoudekirk@gmail.com](mailto:dwoudekirk@gmail.com) if you are willing to help.

## Prayer and Spiritual Care

Mount Olive has a Prayer Chain, coordinated by Kim Ignatius. If you have a prayer request and would like the prayer chain to be in prayer for you or someone you love, or if you would like to join the prayer chain as one who prays, please contact Kim at: 507-271-6087 or [ignatius.kimberlie@charter.net](mailto:ignatius.kimberlie@charter.net).

If you have a prayer request that you would like printed in the bulletin and prayed for by the congregation at worship services, please contact Pastor Glenn or Nancy Britson in the church office or leave a note on the back of a Connection Card available from the church pew. We appreciate your call to the church office in the case of illness, hospitalization, the birth of a baby, or any time you have joys and sorrows to share. Church office: 507-288-1580.



## Mount Olive Lutheran Church

2830 18th Ave. NW

Rochester, MN 55901

Office Hours: 9:00 am-4:00 pm Mon.-Fri.

Closed Friday in Summer

507-288-1580

Website: [molive.org](http://molive.org)



## Mount Olive Staff

**The Rev. Dr. Glenn Monson**  
Senior Pastor

[glenn@molive.org](mailto:glenn@molive.org) Ext. 206

**The Rev. Lisa Janke**  
Associate Pastor of Outreach

[lisa@molive.org](mailto:lisa@molive.org) Ext. 205

**Deacon Travis Beck**  
Director of Worship, Music, and Arts

[travis@molive.org](mailto:travis@molive.org) Ext. 203

**Bill Hollander**  
Congregational Administrator

[bill@molive.org](mailto:bill@molive.org) Ext. 204

**Luke Hollander**  
Director of Children, Youth, and Family

[luke@molive.org](mailto:luke@molive.org) Ext. 207

**Sherry Will**  
Director of Missions and Service

[sherry@molive.org](mailto:sherry@molive.org) Ext. 210

**Carrie Fletcher—Administrative Assistant and Nursery Coordinator**

[carrie@molive.org](mailto:carrie@molive.org) Ext. 209

**Nancy Britson**  
Director of Congregational Life

[nancy@molive.org](mailto:nancy@molive.org) Ext. 202