

January 2020

THE

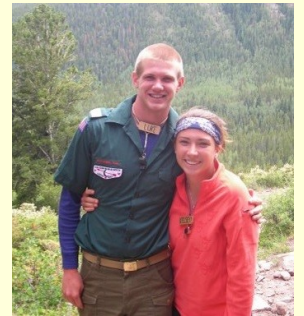
Messenger

MOUNT OLIVE LUTHERAN CHURCH • ROCHESTER, MINNESOTA • 507-288-1580 • MOLIVE.ORG

A Congregation of the Evangelical Lutheran Church in America

Mount Olive Youth Headed to the Rockies!

Mount Olive is sending more than fifteen 7th-12th grade students to the Colorado Rocky Mountains next summer. We will hike through the breathtaking mountains, raft the white-water of the Arkansas River, navigate the high ropes course and more. This is a marvelous setting to grow in our faith, try new things and develop positive community. I am confident this will bring great energy to our youth program. Rainbow Trail Lutheran Camp will charter this trip centered around a 3-4 day wilderness backpacking experience led by trained guides along with outdoor bible study.



Luke as a camp counselor

I worked at Rainbow Trail as a counselor the summer of 2009 and as a Day Camp Director and Intern from 2011-2012. I have seen firsthand how this can be a momentous positive experience for youth. The mountainous setting away from distractions of people and technology, the intentional positive community building led by the staff, and the adventurous activities create a space for youth to grow and build confidence in themselves and their faith. I am



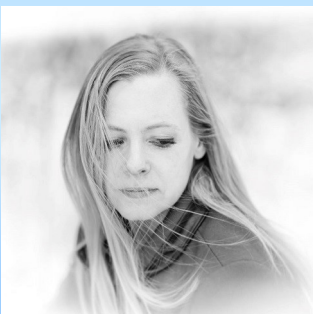
thrilled to be going on this once-in-a-lifetime adventure with the youth!

The cost is \$485/person plus travel expenses. In order to keep costs down, the youth are helping lead a number of fundraisers. Thanks to your generous support during the Youth Bake Sale, we already raised over \$1,500. You are also invited to consider sponsoring a youth to go on this trip. For more information, please watch the calendar and see an additional article on our upcoming envelope fundraiser on the education page.

~ Luke

60th Anniversary Event #4: Pastor Siri in Concert January 31

Many members of Mount Olive remember Pastor Siri Strommen, who served as Associate Pastor at Mount Olive 2006-2012. Pastor Siri serves now at Atonement Lutheran Church in Bloomington, Minnesota. In addition to her pastoral duties, Pastor Siri finds time to perform as a folk musician, having released another album this year, "Leaving the Garden". In conjunction with our 60th anniversary, Pastor Siri will give a concert at Mount Olive on Friday, January 31 at 7:00 pm. A freewill offering will be taken for the 60th Anniversary Fund.



Inside This Edition:

Congregational Life
page 2

Worship
page 3

Service
pages 4-5

Education
pages 8-9

Fellowship
pages 10-11

This Day in Mount Olive History

January is an important month in the life of Mount Olive because on New Year's Day 1988 the Evangelical Lutheran Church in America was born. This meant that Mount Olive's former governing body, the Lutheran Church in America (LCA), was merged with the American Lutheran Church (ALC) and the Association of Evangelical Lutheran Churches (AELC) to form this new body. The LCA had been the home to many churches of Swedish origin in the U.S. and we can still see our Swedish heritage every December when we celebrate Santa Lucia Day.

Annual Meeting January 26

Each year in January, our Mount Olive community gathers for a meal followed by our annual meeting. This is a time to reflect on the accomplishments and blessings of the previous year, and an opportunity to look forward to where God is calling us in the year ahead. In addition to the annual reports of ministry teams and staff, we will elect new officers to lead us in our mission and ministry. Lunch will be served following the 10:30 service on January 26, the meeting will begin at noon. Childcare will be provided in the Mount Olive nursery following meal time. Mark your calendars for this important gathering!

Stewardship 2020 Update

For those of you wondering where the Pledge Card numbers are for 2020, here is the update:

2020: 142 Pledge Cards turned in. General Fund \$481,700; Building Fund \$103,000.

2019: 149 Pledge Cards turned in. General Fund \$489,000; Building Fund \$103,000.

We still have some work to do, but the current draft of the budget for 2020 (at the current General Fund pledge level) is \$26,000 short of anticipated expenses. The Building Fund will accomplish the anticipated budget needs. It is not too late to turn in a Pledge Card if you have not done so. Questions? Contact Bill Hollander, Congregational Administrator, at bill@molive.org or catch him on Sunday.



Mount Olive's Inclement Weather Policy



When the snow flies and the wind chill is -20 degrees, is there still quilting group? Bible study? Worship? Here are the quick guidelines for winter weather.

- If school is cancelled because of inclement weather, all weekday church activities, including evening activities, are cancelled.
- If school dismisses early and community evening events are cancelled due to poor weather, all evening church activities are also cancelled.
- Worship on Saturday night and Sunday is rarely cancelled. In the rare event that this occurs, we will have notification on our website, www.molive.org, our Facebook page, and on the KTTC television channel.
- Always use your judgment before driving in bad weather. If MNDOT advises no travel except in emergency cases, please assume that means church activities as well.

Open Budget Meeting January 12

If you would like to take a detailed look at the 2020 proposed budget, come to the Open Budget Meeting on January 12. Meet in the library at 9:15 am. This is an opportunity to go over the budget and ask any detailed questions.

2020 Offering Envelopes

Offering envelopes for anyone who is not a *Simply Giver* have been made available in the church entry and will be placed in your church mailbox if they are not picked up. Contact Bill in the church office if you would like envelopes or have any giving questions.

Olive Branch News

Our time of “playful planning” for Olive Branch has been both fun and informative. From October through December, we hosted four events designed to increase awareness of the Olive Branch and experiment with different liturgies, topics, venues, and gathering formats. If you attended one of these events you likely noticed that Pastor Lisa has been working with Richard Bruxvoort Colligan, a potential ongoing ministry partner for the Olive Branch. Richard is an accomplished composer, liturgist, musician and theologian who shares our excitement for the mission and vision of the Olive Branch. Pastor Lisa will tell you how grateful she has been for this opportunity to work together and sees enormous potential for what they could accomplish as an Olive Branch team going forward. You will hear more about how you can support this at the Mount Olive Annual Meeting on January 26. You are also welcome to connect with Pastor Lisa if you have any questions, thoughts or ideas to share - lisa@molive.org or 507-288-1580 ext. 205.



To Creed or Not to Creed Event at Fiddlehead Coffee



Thanksgiving Eve Service at Mount Olive



Epiphany of Our Lord

This year we will celebrate Epiphany during our regular weekend worship on January 4/5. Epiphany marks the conclusion of the Christmas season with a celebration of God’s glory revealed through the person of Jesus Christ. Like the light of the star that guided the magi to Jesus, the light of Christ reveals who we are: children of God who are claimed and washed in the waters of baptism, then sent out to be beacons of Christ in the world.



Altar Flowers

The 2020 schedule is now available to sign up to provide the flowers that brighten the sanctuary each week. Place orders for birthdays, anniversaries, baptismal birthdays, births, or in memory of loved ones. Sign up in the Gathering Area, fill out an envelope and include payment. Place orders at least one week in advance. Bouquets are \$40 and bud vases range from \$7.50 to \$13.50.

Worship and Fellowship Volunteers Needed

We are always in need of many volunteers for all of our worship services and fellowship times! Mount Olive uses an online program, Sign Up Genius, to schedule volunteers. Sign up to serve at a day and time that works for you. You will receive an automatic reminder as well as additional details and directions from Nancy Britson, Director of Congregational Life. The Sign Up Genius links are available via invitation and are also accessible from the Mount Olive website, molive.org on the Service tab. You may also call Nancy with your availability or to schedule a training as needed, 288-1580 ext. 202. Your help is sincerely appreciated!

Service at Mount Olive

Thank you for the thousands of service hours Mount Olive volunteers donated in 2019. Family Promise, Food for Friends, Channel One, Next Chapter Ministries, neighborhood schools, Dorothy Day House, Mount Olive Quilters and Prayer Shawl Ministry are just a few ministries that volunteers dedicated their time to. *Pursuing Peace, Building Community* is this year's theme, and with each hand that served, each voice that encouraged and each selfless dollar given, we saw the hand of God compelling each volunteer to share in building up our community by helping those less fortunate. Thank you for making a difference.

2nd Sunday of Service

January 12 will be the next Service Sunday for Sunday school students. Classes will meet as usual, but grades K-12 will take time out to roll bandages for Global Health Ministries. Global Health Ministries is a Lutheran organization that gives medical support to dozens of countries. Even the most basic supplies are often lacking at mission hospitals and clinics overseas. Many health facilities have limited access to clean affordable bandages, an item they use every day as they care for patients. So the bandages we roll and send are greatly needed; in fact, each bandage is sterilized and reused 12 to 15 times.

Lutheran World Relief Collection

Mount Olive will be collecting items for Lutheran World Relief in the month of January. If you would like to be a part of this great ministry and are willing to donate items to complete the Baby Care Kits, stop by the LWR table in the entry and pick up a shopping card. In the past T-shirts (up to size 2T) and flat fold cloth diapers were most needed. Help welcome the littlest ones into a caring international community and swaddle them with love! Please contact Cathy Hanson with any questions or to volunteer to help with sewing or assembling kits.



Family Promise Training

Four times a year, for a week at a time, Mount Olive hosts homeless families participating in Family Promise. Families have their morning and evening meal and stay overnight at the church. A variety of volunteers are



needed to make this program succeed. A volunteer training will be held by Erin and Jason Sinnwell at Mount Olive in the Fellowship Hall on Sunday, **January 5th** following the second service. A free lunch will be served at 11:45 am, training will begin at noon and we should be done by 1:15pm. This training can be for current volunteers, who need to go through training every 3 years, or for new volunteers. From cooking to driving to fellowship, there are many things that you can offer the families. Sign up at the Family Promise table in the entry.

Family Promise Host Week Coming Soon

Mount Olive's next hosting dates are **January 26 - February 2**. That week, volunteers are needed for serving as hosts at church, cooking and serving the evening meal, transportation, and more. It takes many volunteers to make this program possible. Please sign up online using the link below. The link is also available on the Service tab at molive.org. A paper sign up sheet highlighting open spots is on the table in the entry at church. Contact Erin or Jason Sinnwell with any questions-

etracy515@hotmail.com or sinnweja@gmail.com or 507-990-6079.

Online sign up: <https://tinyurl.com/yabq5rwc>

Remaining 2020 hosting dates: May 17-May 24, August 16-August 23 and November 22-November 29.

2GETHER

MOUNT OLIVE

IELCO

Mission Colombia 2020

A team of five Mount Olive members will be traveling to Bogota Colombia in March to connect with the leadership of IELCO (Lutheran Church in Colombia) and our partner congregation, Emanuel, in Paz de Ariporo. Team members include: Pastor Glenn, Kris and Anya Liedtke and Steve and Sherry Will. Please pray for the team as we prepare to travel there. The free-will offering

gathered at the March 4 Lenten meal will go toward travel expenses. If you would like to give financial support to those traveling, please make your checks out to Mount Olive Lutheran Church with Mission Colombia 2020 in the memo. Please look for upcoming projects to support this ministry including, the making of tote bags and the assembling of Sunday School kits by our Sunday school students. Please contact Sherry Will at sherry@molive.org with questions.

Eyeglasses for the Lions Clubs International Foundation

Thank you to everyone who donated eyeglasses for the Lions Club International Foundation. There were 36 pairs of glasses donated this fall. These go to individuals that otherwise wouldn't be able to afford glasses. This is an ongoing collection. Please place your glasses in the bin in the Gathering Area cabinet.

Mount Olive Prayer Shawl Group

All knitters and crocheters are invited to attend our next meeting on **January 14** at 9:00 am. Yarn, needles, treats, and guidance are provided. The group meets from September to May to knit or crochet prayer shawls and hats. If you would like to join the group of knitters or would like to request a shawl for someone who is experiencing illness, loss, or a difficult time, contact Peg Whitley - peg.whitley@gmail.com or call the church office at 288-1580.



SSOM Team Meeting

A reminder to all Service and Social Outreach team members: the next team meeting is Tuesday, January 21, 6:30 pm in the Mount Olive Library. Please arrange your schedule so you can attend this important planning meeting or arrange to have a substitute attend in your place.



Mount Olive Quilters

The quilters meet each Thursday morning at 9:00 am in the Fellowship Hall to prepare and tie quilts. Everyone is welcome to join them. Over the past year, 103 large quilts and 68 baby quilts were made. 30 large and 30 baby quilts were given to The Women's Shelter on December 5th. Other quilts were given to Lutheran World Relief, Families First of MN, the Good Earth Village auction, and more. Thanks, Quilters, for all of your work that is so meaningful both in our community and around the world! If you have any questions, call Sandy Schlenker at 507-529-8215.

Dorothy Day Volunteers Needed



Volunteers are needed to serve the evening meal the first Friday of each month for guests staying at the Dorothy Day Hospitality House, a temporary homeless shelter in downtown Rochester. Volunteers provide and share a family-style meal with the guests in the home's dining room. We are currently in need of volunteers for **January 3, February 7, and March 6**. Sign up in the Gathering Area where you will find more information. Contact Jene Bodensteiner at jbode6@me.com with questions or to volunteer.

Sunday Forums Feature Outside Speakers

The Sunday Forums, most Sundays at 9:15 a.m. in the Fellowship Hall, provide a chance to hear about and discuss a wide variety of topics from the work of ministry partners to global theology. The line-up in January is no exception:

January 5 - Kathy Chatelaine, Associate to the Bishop, ELCA, speaking on AMMPARO, the accompaniment ministry of the SE MN Synod with people living at the U.S./Mexican border

January 12 - Service Sunday – all are invited to help Sunday School with their service project

January 19 - Kathryn Lozada, ISAIAH Southern MN organizer, will lead a discussion of advocacy as we head into the caucus season in Minnesota

January 26 - Pastor Corrine Haulotte, campus pastor for Lutheran Campus Ministries at Winona State University, will present a forum on their work as our ministry partner

Lutheranism 101 – Leading to Adult Confirmation

Pastor Glenn will once again be leading a 4-week study in the foundations of the Lutheran Faith, but with a little different twist. This time, he is extending a special invitation to adults who have never been confirmed in the Lutheran Faith. Perhaps you have been a member of Mount Olive for years, but you grew up in a non-Lutheran tradition, or were not a member of any church and you have always wanted to be a confirmed Lutheran. This class is for you. The class will begin Wednesday, **January 8** at 6:30 pm, and run for 4 consecutive Wednesdays. At the completion of the class, we will discuss together other steps leading to the rite of confirmation in the spring. For any questions, talk to Pastor Glenn.

Pastor Glenn Leads Daytime Bible Study

For those who don't like driving in the dark and have been asking for a daytime Bible Study, your requests have been heard! Pastor Glenn will be leading a 6-week Bible study in the Book of Matthew (primarily around the teachings from the Sermon on the Mount) on Thursday mornings at 10:30 beginning **January 9**. Books are \$8 and you may sign up and purchase your book in the Gathering Area sign-up area at church. Guests are always welcome.

Pub Theology News

The group continues to enjoy the amazing hospitality at Fiddlehead Coffee Co. every Monday night. For the month of January, we'll be exploring the various ways we think about, experience and understand Jesus. Have you heard of the Cosmic Christ? Buddy Christ? Christ as CEO? Do you see Christ as a leader of a global movement? A companion on the way? A disruptor of the status quo? Through hymns and songs, biblical testimony, contemporary writing, and our own imaginations, we will seek to expand our awareness and wonderings about Jesus, and we intend to have a really great time doing it. We gather at 5:30 pm for casual conversation, along with food and drink as desired, and our discussion takes place from 6:30 to 7:30 pm. You can find out weekly topics on our blog: rochesterpublictheology.wordpress.org. Sign up directly on the blog to get updates by email, or ask [Pastor Lisa](#) or [Travis Beck](#) for help doing so.



Men's Discipleship

Men's Discipleship is a Bible study group for men meant to move them closer to God and to help them understand God's will in their lives. They meet weekly on Saturday mornings at 8:30 am in the front conference room at church. They will continue to study the book of Acts. This group is open to all men of the congregation. Contact Mark Masbruch for more info - masbruch@hotmail.com.

Youth Video & Popcorn January 5

Because January 5 falls within Winter Break, we will not have Sunday School, but will watch a movie and eat popcorn instead. All youth are encouraged to come to the Youth Room for fellowship and a movie at 9:15 am on Sunday, January 5.

Youth Board

All Mount Olive 7th-12th graders are invited to participate in the Youth Board. This month we are meeting at 6 pm on January 15. We will be planning a lock-in, working on fundraising for our summer trip and having fun! There will even be snacks.

Skating Outing

On January 12, Mount Olive families are invited to participate in open skate at the Rochester Recreation Center on Elton Hills Drive 1-3 pm. This will be a great time for fellowship on the ice. This is their busiest time of year, so we are encouraged to arrive by 12:45 pm to rent skates. Admission is \$5/adult, \$4/youth and children 5 and under are free. Skate rental is \$2/person.

144 Envelopes! January Youth Fundraiser

Our youth are headed to Colorado this summer for a once in a life time experience. This trip gives youth a chance to explore their faith, build community, and have a mountainous adventure seeing God's beauty from a new perspective. Fundraising has been off to a great start. We have received some gifts and raised over \$1,500 at the youth bake sale. Thank you for the support! As the costs associated with this trip are high, these youth can use as much gracious monetary support as possible. So, in January, we will be starting the "144 Envelopes" fundraiser. Stop by the table in the entry way to pick up an envelope (or many envelopes) with any number between "1" and "144" on the front. That number is the amount of money you would like to donate for this trip. You decide your level of help – it is that easy! If all envelopes are picked up and fulfilled, the youth will raise over \$10,000! That will help cover the majority of the trip costs! Please prayerfully consider supporting our youth on this trip.



A Confounding Christmas Story

On December 15th, Mount Olive's children and youth told the story of Christmas with an interesting twist in *A Confounding Christmas Story*. This program was written by Mount Olive's own, Jessi Hafeman, and directed by Intern Luke Hollander. A big thank you to all that helped make this a successful event for our youth, especially all of their teachers and music leaders that did the hard behind-the-scenes work. The performance was enjoyed by all!



Twelfth Night Potluck and Game Night

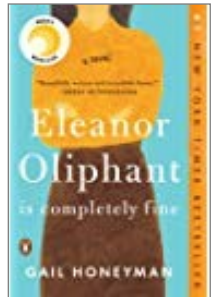
Join the celebration of the Twelfth Night of Christmas on Sunday, **January 5**. The potluck meal will begin in the Fellowship Hall at 5:30 pm. Table service and beverages will be provided. Bring a main dish, side dish or dessert to share. Following the meal, we will have some time of fellowship enjoying board games or cards. You may also bring a favorite board game to share. Sign up in the Gathering Area if you can attend and indicate if you are able to help with set up or clean up. We hope to see you then!

Ripe Olives Welcomes Pastor Glenn

On Friday morning, **January 10** at 9:30 am, the Ripe Olives will begin the year with a program given by Pastor Glenn, showing pictures of his trip this past fall to Iona, Scotland, and other points in the UK. The island of Iona has been a pilgrimage site for Christians ever since a small group of monks under the leadership of Saint Columba founded a community there in 563. Pastor Glenn and his wife, Ruth, were invited on this pilgrimage by a clergy couple they knew in Austin and were greatly blessed by this trip. Come and hear about Iona, the ancient traditions of Celtic Christianity, and lots more. Guests are always welcome. Sign up at the Gathering Area cabinet. Contact Nancy Britson with questions 288-1580 ext. 202 or nancy@molive.org.

Monday Book Group

The Monday Book Group gathers again on **January 13** at 6:30 pm, in the library, for their monthly book discussion and a time of Christmas fellowship. The December selection is *Eleanor Oliphant is Completely Fine* by Gail Honeyman. “Beautifully written and incredibly funny, *Eleanor Oliphant Is Completely Fine* is about the importance of friendship and human connection. I fell in love with Eleanor, an eccentric and regimented loner whose life beautifully unfolds after a chance encounter with a stranger; I think you will fall in love, too!” —Reese Witherspoon. New readers are always welcome to join the group. Contact Jodi Schoer for more information, mjschoer@charter.net or 288-1951.



“Hymns and Hops” Coming in February

Mount Olive will be hosting a hymn sing at Little Thistle Brewery, 2031 14th St NW, on Saturday, **February 8**, 7:30-9:30 pm. ALL are welcome to partake regardless of singing abilities or beverage preference. Craft brews and sodas will be available for purchase. This time of fellowship is designed to rejuvenate the spirit during these frigid winter months, while experiencing God’s presence through song and community. A free will offering will be collected and funds will be used by Mount Olive Women of the ELCA to explore how to best support current and prospective ELCA members from steadily declining demographic populations. Childcare will be provided in the Mount Olive nursery for this event; drop off begins at 7:00 pm. Watch for a sign up sheet in the Gathering Area in early January. **Fun fact:** Did you know that in Luther’s era, brewing beer with hops was a way for Protestants to rebel against the Catholic Church? Unlike other herbs used for brewing at that time, hops were not taxed by the Catholic Church.

Lyra Baroque Orchestra Presents *Passaggi*

Passaggi: improvised embellishments or flourishes found especially in 16th-century music – Merriam-Webster. A modern-day master of passaggi on the cornetto, Bruce Dickey, joins a special group of Lyra musicians for a concert of 16th- and 17th-century music featuring this beautiful and unusual instrument. The concert is at Mount Olive on Friday, **January 24** at 7:30 pm. A pre-concert talk will begin 60 minutes prior to the concert. Tickets are available at www.lyrabaroque.org or at the door.



Faith Seeking Understanding (FSU) Offers Movie Night



The Faith Seeking Understanding book group will meet this month at a local movie theatre to view a newly released film "Just Mercy." It is a powerful and thought-provoking true story about lawyer Bryan Stevenson (played by Michael B. Jordan) and his history-making battle for justice. The plan is to attend a Sunday matinee on **January 12** at 3:50 pm at Marcus Rochester Cinema, 4340 Maine Ave. SE, then gather at a nearby restaurant for food and discussion. We welcome everyone to attend; please sign up in the Gathering Area to help with dinner planning. Please plan to purchase your own ticket online; contact Carole Joyce if you need any assistance - 507-269-9374.

Little Leapers Meet January 19

Little Leapers, a group for parents and children who have not yet started Sunday school, meets on Sunday, **January 19** at 9:15 am. Parents join together to share in caring conversation and fellowship as the little ones take a leap into faith. Follow the green frogs on the signs in the entry and hop on down to join the group in classroom 13 in the Education Wing! If you have any questions about this group, please contact Kaitlin Maus at: kaitlinridl@gmail.com.



Saint Lucia Celebration

On Sunday, December 8, Mount Olive celebrated the Festival of Saint Lucia. Special thanks to Naomi, Rachel, and Miriam Circles for preparing for the procession of Saint Lucia and serving the receptions following each service. Anya Liedtke-Quick and Emily Kuehl portrayed Lucia along



with star boys Eli McLaren, Tyler Rislow, Noah and Ian Mannix. Mint girls were Georgia and Clara Welle, Grace Tofilon, Violet Kuehl, Sydney and Piper Hamann, Lina and Ella Oudekirk, and Julia Hooke. Check out the Mount Olive Facebook page for more pictures of the celebration.



More December Fellowship



Carolers made their annual trip to local senior living facilities to spread Christmas cheer on December 8. Mount Olive members at The Homestead and Shorewood joined in singing.



Mount Olive Women gathered for their annual Christmas Party on Monday, December 2. Habibo Haji was the guest speaker with an inspirational message of resilience. Food, music, and fellowship were enjoyed by all.

Mount Olive's Welcome Statement:

"We trust that God calls Mount Olive Lutheran Church to a ministry of reconciliation. We embrace as a gift the diversity of our neighborhood and the world, and we extend God's hospitality by welcoming, hearing, and treasuring:

All gender identities and sexual orientations

All races and ethnicities

All ages and abilities

All economic statuses and education levels

All faith journeys and personal histories

As Christ welcomes all, we too welcome the full inclusion of all people into the life, ministry, and sacraments of Mount Olive, joining in a journey toward greater love, understanding, and mutual respect."

Women of the ELCA National Gathering Planned for July 2020

On July 16-19, 2020, the Women of the ELCA nationwide gathering will be in Phoenix, Arizona. Early bird registration is open through January 6. Mount Olive Women of the ELCA offers scholarship funds to divide among the members who wish to attend. Attend worship services, informational sessions, Bible study, and active events to your their place in the body of Christ. For more information about the gathering, Women of the ELCA, or to join one of the Mount Olive small groups, please contact Regina Seabrook at rseabroo@gmail.com or 651-285-3912.



[www.womenoftheelca.org/
new-triennial-event-page](http://www.womenoftheelca.org/new-triennial-event-page)

Christmas Season Thank You

Special thanks to all of the volunteers who made the Advent and Christmas seasons so special!

- Musicians for their beautiful musical offerings
- Altar Guild members for beautifully decorating the sanctuary and preparing for services each week
- Worship volunteers for helping the services run smoothly
- All those who served for Salvation Army, Food for Friends, Family Promise, Channel One, neighborhood schools & more
- Fellowship volunteers for serving cookies and coffee
- Those who plowed the parking lot and kept the sidewalks clear
- All of the office helpers who helped prepare mailings, answer phones etc.
- The Mutual Ministry team for providing the staff with treats.

Family Circle Learning Center Now Open

The new daycare center located in the Mount Olive Education wing, Family Circle Learning Center, sponsored by Families First of MN, is now open for infants, toddlers, and preschoolers. Mount Olive members are eligible to receive a 20% discount. Informational flyers are available at the counter in the Gathering Area. You may contact Sarah Kloczek, Center Director, at 507-884-4532 to schedule a tour. Go to familycirclelearningcenter.com to see registration forms and more info.



Mount Olive Lutheran Church

2830 18th Ave. NW
Rochester, MN 55901
507-288-1580 Website: molive.org



A Reconciling in
Christ Community

Mount Olive Staff

The Rev. Dr. Glenn Monson
Senior Pastor

glenn@molive.org Ext. 206

The Rev. Lisa Janke
Associate Pastor of Outreach

lisa@molive.org Ext. 205

Deacon Travis Beck
Director of Worship, Music, and Arts

travis@molive.org Ext. 203

Intern Luke Hollander
Intern Pastor of Children, Youth, and Family

luke@molive.org Ext. 207

Bill Hollander
Congregational Administrator

bill@molive.org Ext. 204

Sherry Will
Director of Missions and Service

sherry@molive.org Ext. 210

**Carrie Fletcher—Administrative Assistant
and Nursery Coordinator**

carrie@molive.org Ext. 209

Nancy Britson
Director of Congregational Life

nancy@molive.org Ext. 202