



The Messenger

FEBRUARY 2022

MOUNT OLIVE LUTHERAN CHURCH • ROCHESTER, MINNESOTA • 507-288-1580 • MOLIVE.ORG

A Congregation of the Evangelical Lutheran Church in America

Delivering Spiritual Hugs

Perhaps at no time during the past two years of the pandemic have we been more mindful of the burden some members of our community are bearing, particularly health care workers and teachers. Overtime, long days, and extra shifts, all done in stressful environments have become a daily occurrence for many. Being mindful of this burden, we as a congregation want to reach out with a “Spiritual Hug” and say, “We Love You. We are With You.” How will we do this? We can each answer that question for ourselves, but here are a few ways to get involved:

- Participate in an all-congregation Day of Prayer by coming to the church at any hour on Wednesday, February 2, or by participating online, and praying for our health care workers, teachers, and others.
- Pick up several or a stack of pre-printed, stamped, and addressed cards at the church office which you can use to write a note of encouragement.
- Purchase gift cards to local coffee shops or restaurants that we will send out from the church.
- Purchase some small “comfort” items/foods to be given out in “blessing bags” from the church.
- Knit a prayer shawl that can be given as a gift to someone in need of a hug.
- Make a financial gift that can be used to buy items for “blessing bags”.
- Deliver completed “Blessing Bags” to identified recipients.

Look on the next page for more information on these initiatives. Let’s make this Valentine’s Day a memorable one. Thank you.

Pastor Glenn

The Season of Lent Begins March 2

Ash Wednesday, March 2, is the day that begins our annual journey to the Cross of Good Friday and the Empty Tomb of Easter Sunday. We will observe Ash Wednesday with in-person, live-streamed worship at 6:30 pm and Ashes-To-Go from noon to 1:00 pm. For those who choose the drive-by option, you will receive a cross of ashes on your forehead and a prayer from one of the pastors.

Our midweek Lenten Theme this year is “Turning Toward God’s Abundance.” We will look at God’s abundance through reflection on five of God’s attributes: Faithfulness, Mercy, Compassion, Forgiveness, and Love. We will be using the Service of Word and Prayer from the new worship resource “All Creation Sings,” as well as using creative ways to bring our prayers before God. Each service will begin at 6:30 pm in the Sanctuary and will also be live-streamed.

Inside This Edition:
Congregational Life page 2
Worship page 3
Service pages 4-5
Education pages 8-9
Olive Branch page 10
Fellowship page 11

Joint Religious Legislative Coalition News

Our ministry partner, the Joint Religious Legislative Coalition (JRLC), will hold its annual Day on the Hill virtually on March 15, 6:30 – 8:45 pm. At this meeting you will hear from state-wide leaders as they lay out the JRLC strategy for encouraging faith communities across the state to advocate for people who often have no voice at the state capitol: those experiencing homelessness, the incarcerated, the working poor, and others. Go to jrlc.org to register so that you can be an informed advocate for those in need in our communities.



2022 Offering Envelopes

Offering envelopes for anyone who requested them have been placed in your church mailbox or may be dropped off for those unable to attend. Contact Bill Hollander in the church office- bill.h@molive.org - with any giving questions.

Blessing Bags and Encouragement Cards

The latest surge of the pandemic has sparked discussion among the Mount Olive staff, church council, and Congregational Life and Hospitality team surrounding ways to support members of our congregation and community who have been working long, stressful hours: hospital, clinic, and nursing home staff, teachers and school staff, first responders, and others. In addition to praying for them in worship each Sunday, we have the following plans to show that we care.

- **Encouragement Cards:** You may pick up thank you cards that have been addressed and stamped to send to our members who work in the areas mentioned above. You simply add your own note of encouragement and put it in the mail. We'll also include a small gift card for coffee or a treat.
- **Blessing Bags:** We plan to deliver a "blessing bag" to those identified in the areas mentioned above.

To help with this project you may:

1. Contribute gift cards to local restaurants, coffee shops, etc.
 2. Knit a prayer shawl. (see page 5)
 3. Drop off treats to include in the bags - granola or protein bars, chocolates, lotion, candles, any similar small items that are individually wrapped. Items needed by February 13.
 4. Help with assembling bags following worship on February 13.
 5. Deliver bags to identified workers.
 6. Contribute financially to purchase supplies for blessing bags.
- **Day of Prayer:** Stop by the Day of Prayer on February 2, 7 am-7 pm. Details on page 3.

Please note: Our compiled list of workers includes Mount Olive members and friends of the congregation that we could identify through our database. The database has limits, so if you are aware of someone we have missed or are yourself in need of support, please let us know. Contact Nancy Britson with any questions or input—nancy@molive.org.

Pastor Glenn's Devotions to Continue

In year's past we have offered a published devotion series during the season of Lent. Since Pastor Glenn began writing weekly devotions again during the Advent season we have received numerous reports from people who appreciate this weekly series. In view of that, this year Pastor Glenn will continue to write devotions during the Lenten season. As usual, they may be accessed electronically on the Mount Olive homepage, in print each week at church, or by mail, upon request.

Day of Prayer for Weary Workers

We've set aside Wednesday, **February 2** as a Day of Prayer for workers in our church and community who are experiencing high levels of stress due to the prolonged impact of the pandemic. In particular, we're thinking of health care workers, teachers and school staff, first responders, and other essential workers. Please take a moment to stop by Mount Olive any time between 7:00 am and 7:00 pm to have a quiet moment of prayer in the Sanctuary. Prayer helps and requests from these workers, candles, and music, will all create an inviting atmosphere for prayer. All are invited to come by, light a candle, and sit in prayer for as long as you like. Additionally, there will be an online offering from Pastor Lisa and Richard Bruxvoort Colligan for those unable to come to the sanctuary. Watch for these online resources shared by email early on February 2.



Worship Volunteer Opportunities

Worship volunteers are needed this winter to keep our 9:00 am Sunday services running smoothly. We ask that all volunteers are fully vaccinated. If you would be willing to help out, please click here to sign up: www.signupgenius.com/go/20f0449a5a92aa1fb6-mount1 or contact Nancy Britson, Volunteer Coordinator, with your availability or questions—nancy@molive.org or 507-288-1580 ext. 202. Training is available for new volunteers.

Altar Flowers

The 2022 schedule is now available to sign up for providing flowers to brighten the sanctuary each week. Place orders for birthdays, anniversaries, baptismal birthdays, births, or in memory of loved ones. Sign up in the Gathering Area, fill out an envelope and include payment. Place orders at least one week in advance. Bouquets are \$40 and bud vases range from \$7.50 to \$13.50.

Ashes To Go

Is Ash Wednesday both an important worship day and a work day for you? Perhaps Ashes-to-go is what you need. Just drive by the church anytime between noon and 1:00 pm on March 2 and you will be greeted by one of our pastors who will provide you with a smudge of ashes on your forehead, a blessing, and a prayer. All this from the convenience and health safety of your own car. We look forward to seeing you.

Winter Worship Schedule

Sunday, 9:00 am—Traditional Worship— a full service with Holy Communion in the sanctuary.

Wednesday, 6:30 pm—Wednesday worship with Holy Communion in the Fellowship Hall. These services are not recorded. In March, mid-week Lenten services will move to the Sanctuary and will be recorded.

Online Worship—The 9:00 am worship service is live-streamed from the Sanctuary each Sunday, and is also available on the Mount Olive [YouTube channel](#) following the service. The link is shared on www.molive.org along with past [worship](#) services.

2nd Sunday of Service – Baby Care Kit Assembly

On the Second Sunday in February, we are focusing our education hour on service. On February 13th beginning at 10:15 am, we will assemble

Lutheran World Relief Baby Care Kits. All ages are encouraged to participate. Throughout the year, members of Mount Olive have sewn and collected infant clothing for these Baby Care Kits that are shipped all over the world to mothers and their newborns. Thank you to everyone who has donated items for these kits. To learn more about LWR Project Promise, including where kits are helping, visit build-kitsofcare.org. The prepared kits will be blessed in worship on February 20.



Channel One

We have plans for something fun to support Channel One during Lent. Please watch for more information in the March *Messenger*. For now, Channel One still needs your support. Donors are helping us to provide food for over 11,800 families each month, but there are still many individuals and families facing hunger right now. If you are able, consider making an online donation to assist us in addressing food insecurity.

<https://www.helpingfeedpeople.org/donate/donate-paypal/>



Dorothy Day House

Mount Olive's commitment to the Dorothy Day Hospitality House is to provide a meal to the guests staying there on the first Friday evening of each month. We need volunteers for the month of **March** and beyond. When you sign up to serve at Dorothy Day House, you only need to order a meal or deliver a home cooked meal to the house before 6 pm the Friday you signed up to serve. The house volunteers will serve and clean up after the meal. The guests and the volunteers

are required to wear masks and practice social distancing as recommended by the CDC but are not mandated to be vaccinated. When you wish to volunteer to serve Dorothy Day Hospitality House you may either sign up on the sheet in the Gathering Area at church or contact me. Thank you for your service! Jene Bodensteiner, Volunteer Coordinator for Dorothy Day House at Mount Olive. E-mail: jbode6@me.com. Phone: (507)287-0257 or (507)398-2009.

Neighborhood Schools

Please keep the teachers and students of all the Rochester schools as well as the School Board members and administrators in your prayers. They are all going through some difficult times. We will keep you updated with any supply needs as they become available.

Family Promise

Family Promise is requesting kids' size disposable masks; however, they will accept small fabric masks with fun colors or designs. Please leave any donations in the labeled tote in the Entryway. Family Promise continues to use Sign-Up Genius to gather volunteers for providing meals. Please be aware

that Family Promise cannot share information about vaccination status of staff and guests, so if you choose to deliver the meal in person, mask wearing is strongly encouraged. For no contact delivery, there is a blue bin right in the front entry way where you can put the food around 6:00 pm. Here is the link for the meal sign-up: <https://www.signupgenius.com/go/30e0c4fa4aa22a3f94-prepare>. For a list of items that the house needs click this link: <https://www.fprochestermn.org/wish-list>.



Mount Olive Prayer Shawl Group—Knitters Needed

The Mount Olive prayer shawl group will meet on **February 8** at 10:00 am in the Library. Yarn, needles, patterns, and guidance are supplied for anyone interested in gathering to make the prayer shawls that are offered to those experiencing illness, loss, or a difficult time. We will be blessing shawls in worship on February 13 and sending them in “Blessing Bags” for some of our weary workers. Please contact Vickie Kubly if you would like to join the group - 507-282-7696. You may join them to meet in-person or work on your own if you prefer. If you would like to request a prayer shawl for someone you know, please contact Vickie, or you may call the church office at 507-288-1580.



Mount Olive Quilters

The quilters meet each Thursday morning at 9:00 am in the Fellowship Hall to prepare and tie quilts that are sent to Lutheran World Relief and local service organizations. Everyone is welcome to join them. The quilters can always use more cotton fabric for making the quilt tops. Donations may be left in the Gathering Area cabinet, where there are also small and large quilt top kits for sewing at home. If you have any questions, please contact Donna Grever at 507-206-4605.

Afghan Refugee Family Update

The Khairi family is settling in nicely. They are all set up in their new apartment. The family has had a few different outings into the community. Our volunteers have been working on several different skills with them and they all say their ABC's already! Formal English classes at the Hawthorne Education Center will be starting very soon. They have made friends with some of the other Afghan families in their apartment complex and are often visiting each other. At this time, we do not need any household items for our family, however, if you would like to donate gift cards to Walmart, Target, or Hy-Vee, we will make sure that the family gets them. We will also pass along any monetary donations that are given. Please put “Afghan family” in your check memo or comment if contributing online. Please continue to keep the family in your prayers. Thank you.

In Search Of: Home Furnishings-Couches, Tables, Dressers, and more

Catholic Charities Refugee Resettlement is in need of home furnishings to support several more Afghan and refugee families expected to arrive in Rochester in the next few weeks. All of their stored furnishings were depleted after the first wave of Afghan evacuees were resettled in 2021.

Currently, the most needed items are:

- 10 couches
- 10 dressers
- 10 kitchen tables with chairs
- Twin beds
- Lamps
- Coffee tables



How to Help: Please email a picture of your donation item(s) to rrvolunteer@ccsomin.org. Once received, we will contact you to coordinate a drop-off time. Thank you for your consideration!

Contact Carrie Fletcher at carrie@molive.org with any questions.

Sunday Forums Run the Gamut

In February, Sunday Forums will provide a rich variety of topics that explore everything from our Afghan family to Lenten highlights. Here's the line-up:

- **February 6** – Carrie Fletcher, Director of Service and Social Outreach will give an update on our Afghan refugee family and all that is involved in Community Sponsorship.
- **February 13** – Service Sunday—All are welcome to assemble Lutheran World Relief Baby Care Kits
- **February 20** – Homeless Youth Services: Lutheran Social Services and Zumbro Lutheran Church, a partnership
- **February 27** – Held in the Seasons: A Look at the Season of Lent -The 40-day liturgical season that begins on Ash Wednesday is called Lent, named for the *lengthening* of days as Spring emerges. Join Pastor Lisa and Richard to prep for this purple part of the church year. As always, attendees will receive a touchstone gift to mark the season.

We meet each Sunday at 10:10 am in the Fellowship Hall. Please join us.



“Just Mercy” Movie Invite

Join the Mount Olive Team Exploring Anti-Racism for a showing of "Just Mercy" at Gray Duck Theater on Sunday, February 27th at 4 pm. We will provide reflection/discussion prompts if you would like to gather with a small group following the movie for dinner and conversation. We'll let you decide what you're up for and leave the post-movie planning to you!

Pastor Glenn's Lenten Bible Study on Wednesdays and Sundays

During the season of Lent this year, Pastor Glenn will lead a Bible study entitled “God’s Extraordinary Church”, from the Book of Ephesians. During each week of this 6-week study we will ask the question, “How are we building the Church?” through the lens of the 6 chapters of Ephesians. The book of Ephesians is thought to have been a “general epistle” written not only to believers in Ephesus, but meant to be distributed to other fledgling churches as well. Some of the most beloved passages for Lutherans come from this book: “For by grace you have been saved through faith, and this is not your own doing; it is the gift of God – not the result of works, so that no one may boast.” (2:8-9) Studies will be held each Wednesday at 7:30 pm via Zoom and Sundays during the Sunday Forum hour, March 2 – April 10 . Study guides are \$8.00. Sign-up and order a book at the cabinet in the Gathering Area at church.

Women's Small Groups

In February, Mount Olive women's circles will resume meeting for fellowship and a study from *Gather Magazine*. The February study is entitled *The kingdom of God: Mysteries of the Kingdom* by New Testament scholar Mark Allan Powell. Learn more at www.gathermagazine.org or this [link](#). **Study Leaders for the February meeting dates will meet with Pastor Glenn on Tuesday, February 1 at 5:30 pm in the conference room near the office.** Contact Nancy Britson in the office if you are interested in joining one of the small groups, which meet at a variety of times. - nancy@molive.org.



Summer Camping Opportunities

As we survive the cold of winter and the viral blizzard of Covid, it seems like a perfect time to dream about and plan for summer camp and programming! Mount Olive has a few opportunities coming up this summer, especially for youth and families. The week of **July 10-15** we hope to send as many kids to Good Earth Village as we can. Confirmation camp will be an overnight experience for students currently in grades 6-8. Village Kids is a day camp from 9am to 4pm during that week and is available for current kindergarteners – students in grade 5. You may register online at goodearthvillage.org or contact Pastor Luke with questions. There is financial assistance available for those that experience that as a barrier.

Additionally, we have set a date for our annual Family Camping Weekend at Chester Woods. The weekend of **August 19-21**, all are welcome to come out to the park, enjoy outdoor activities and fellowship, worship around a campfire, and even camp if you are interested! More details to come in the coming months.



2022 Summer Youth Gathering

Registration for the National Youth Gathering is currently on pause, but we are still hopeful that a group of high schoolers (students who are currently in grade 8-12) will participate in this experience. This gathering

will be in the Twin Cities **July 24-28**, providing it is not postponed or cancelled. Contact Pastor Luke if you are interested – luke@molive.org.

Sunday School Resumes!

Thank you to all the families for your flexibility as we continue to try and figure out Sunday school in the midst of an ever-changing pandemic. The current feedback has largely been to put Sunday school on hold until we can safely meet in person. Our hope is to start again on Sunday, **February 20**, when we will begin meeting on the 1st and 3rd Sundays of the month starting with large group time and concluding with small group activities. Please reach out to Pastor Luke with any support or feedback you might have - luke@molive.org.

High School Fellowship

We are looking for fun events to get on the calendar for high school fellowship. If there is something that you would be willing to lead or host – like ice skating, sledding, a movie or video game night – please contact Pastor Luke and we will get it on the schedule. We are looking to shake things up and try new ways of gathering for high schoolers in 2022.

Confirmation

Wednesday evening confirmation class has been meeting, pivoting to Zoom for much of January. We will continue to meet, 6:30-8 pm, every other Wednesday through April 27. These classes are supplemented with a three hour retreat once a month on Sundays. This month's retreat is **February 27**. Look for more details via email.

Men's Discipleship

Men's Discipleship is a Bible study group for men meant to move them closer to God and to help them understand God's will in their lives. They meet weekly, on Zoom, on Saturday mornings at 8:30 am. They are studying 1st Corinthians in their continuing study of Paul's letters. This group is open to anyone in the congregation. Contact Mark Masbruch for more information and the Zoom link- mmasbruch@hotmail.com.



"A Church that Likes Change"

Olive Branch's tag line is "a church that likes change." Well hello, January 2022! A surge in COVID-19 cases required another pivot for many of us. At Olive Branch, we decided to take a few weeks away from our in-person church at Gray Duck and go online for a different kind of outreach. The first two Mondays, we used a pub theology format to discuss the "Unconscious Enmeshment" of politics and faith the first week, and forgiveness the second week. Both sessions had wonderful discussion among our thoughtful crew.

(Thanks to all of you who attended!) It was exciting to see a group that included Olive Branch regulars, Pub Theology devotees, Off The Pagers, plus new friends from St. Louis, MO and Madison, WI. Our third week, we held a contemplative prayer service - silent meditation interspersed with poetry and songs. Every once in a while we experiment with ads on social media to see who might be attracted, and online events mean a global audience. As one of Mount Olive's arms of outreach, Olive Branch Church is able to be flexible and responsive to emerging needs in our community. Thanks for your support!



The Olive Branch Way: Liturgy

One piece of liturgy we do at the beginning of each Olive Branch Church is a land acknowledgement. (Oh the things we didn't learn in seminary!) As Euro-descendants come to understand the deeper history of our country, land acknowledgements have come to be more and more commonplace among church and government meetings. Right after our opening song, we acknowledge that we meet on the lands of the Lakota Wahpeton people. It's part of our centering time. Other changes in our wider culture include less emphasis on Columbus Day because of the connotations of racism, genocide, and slavery, and greater recognition of Indigenous Peoples' Day.



February's Free Movie Night

Monday, February 28th, at 6pm we're showing **Encanto**, a delightful animated movie for all ages about a family with magical gifts. It won the 2021 Golden Globe for best animated picture. These monthly free movie nights are non-churchy outreach events, so invite anyone you

want. Doors open at 5:30 pm for hanging out with yummy snacks. Masks required for safety.

Gray Duck Theater: 619 6th Ave NW Rochester.

Olive Branch Church

Olive Branch Church continues to meet on Monday evenings at Gray Duck Theater & Coffeehouse, 619 6th Ave NW, Rochester. Doors open at 5:30 pm; church starts at 6:00 when you hear the strum. It's led by Pastor Lisa and Richard BC, visitors are always expected. Thanks for your support of this exciting outreach ministry!

Questions? Contact Pastor Lisa at lisa@molive.org.



Monday Book Group

The **Monday Book Group** gathers monthly to discuss a wide variety of literature. They will meet via Zoom on **February 7** at 6:30 pm. This month's selection is *The Only Woman in the Room* by Marie Benedict. A powerful book based on the incredible true story of the glamour icon and scientist, Hedy Lamarr, *The Only Woman in the Room* is a masterpiece that celebrates the many women in science that history has overlooked. If you would like to be added to the email list and receive the Zoom invitation for February, contact Jodi Schoer at mjschoer@charter.net.



Ripe Olives Moves to Zoom

The Ripe Olives, Mount Olive's group for retired folks, has taken a pause in meeting in-person for January and February. For **February 11**, we will have an interesting and informative Zoom program at 9:45 am. Jason Atsales, a park ranger with the John F. Kennedy National Historic Site will share a presentation on the birthplace of JFK, the Kennedy family and the site in Brookline, Massachusetts. Everyone is welcome to join the Zoom meeting: <https://us02web.zoom.us/j/9802525207>

We look forward to March, when we plan to meet in-person on **March 11** at 9:30 am. Congregation member Loren Else will talk about the Alaska's move to statehood, attained in 1959, including the visit of President Eisenhower, and show some remarkable photos his family took over 60 years ago when they resided there. RSVP for March to 507-288-1580 or nancy@molive.org or sign up in the Gathering Area at church.

It's Groundhog Day....Again

Remember the above line from the movie Groundhog Day? Bill Murray lives through the same day, Groundhog Day, over and over again until he finally gets life right. Seems about right, huh? We called on our Mount Olive Groundhog Day Guru, Don Halley, to help provide a bit of levity for this month's *Messenger*. For many years, Don has written a new Groundhog Day hymn each year to help us get through the winter. Here are a couple Don shared:

Away in a Meadow

Tune=Away in a Manger

Away in a meadow all covered with snow
The little old groundhog looks for his shadow
The clouds in the sky determine our fate
If winter will leave us all early or late

Cruddy Old Winter

Tune = Snoopy vs The Red Baron

As we now turn to February
The winter thus far's been beaucoup scary
I wish I could say I made it safely through
But I fell on the ice and my fingers turned blue

Chorus:

Ten, twenty, thirty, forty days and more
This cruddy old winter still holds in store
Six more weeks of this cold white stuff
Hey cruddy old winter: I've had enough



Oh how I wish the weather was warm
But the mercury has dipped well below the norm
And I have no ride because my car has died
It was buried in December while parked outside
(Chorus)

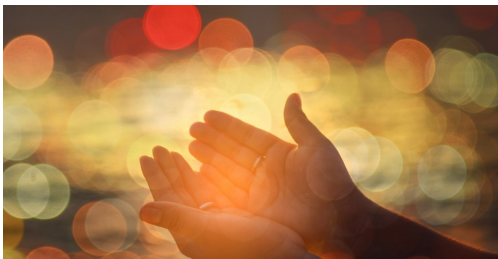
Today was the day that my hero arose
On groundhog Phil I had pinned my hopes
But a shadow he saw to my dismay and chagrin
He turned on his heels, went down his burrow
again (Chorus)

Annual Meeting Recap

Tom Rigby, president of the Church Council, presided at a very positive Annual Meeting of the Congregation on Sunday, January 30. We elected new officers, including President-elect, Keith Hanson, passed a budget that included increased support for staff and mission partners, and passed several constitutional items. Pastors Lisa Janke, Luke Hollander, and Glenn Monson all presented oral reports and celebrated the good work done in and through Mount Olive in the past year. For anyone wishing to see the annual meeting online, click [here](#) to view or visit our [website](#). Annual reports are available to pick up in the church office, may be viewed on the website, or request an electronic copy by emailing nancy@molive.org.



New artwork for the Fellowship Hall depicting our four pillars was unveiled at the Annual Meeting.



Prayers and Prayer Chain Updates

Mount Olive members and friends in need of prayer are being remembered by prayer chain members, the Mount Olive staff, and are included in our bulletins that are not shared online. Prayer chain requests are sent along via email to the group as they are received by the prayer chain coordinator, Kim Ignatius, and also sent out before weekend services. If you have a prayer request and would like the prayer chain to be in prayer for you or someone you love, or if you would like to join the prayer chain as one who prays, please contact Kim at: 507-271-6087 or ignatius.kimberlie@charter.net. You may also contact any of the pastors with requests via phone or email—see contact information below.

Mount Olive’s Welcome Statement:

“We trust that God calls Mount Olive Lutheran Church to a ministry of reconciliation. We embrace as a gift the diversity of our neighborhood and the world, and we extend God’s hospitality by welcoming, hearing, and treasuring:

All gender identities and sexual orientations

All ages and abilities

All faith journeys and personal histories

All races and ethnicities

All economic statuses and education levels

As Christ welcomes all, we too welcome the full inclusion of all people into the life, ministry, and sacraments of Mount Olive, joining in a journey toward greater love, understanding, and mutual respect.”



Mount Olive Lutheran Church

2830 18th Ave. NW
Rochester, MN 55901
507-288-1580 Website: molive.org

Mount Olive Staff

The Rev. Dr. Glenn Monson Senior Pastor glenn@molive.org Ext. 206	The Rev. Lisa Janke Associate Pastor of Outreach lisa@molive.org Ext. 205	Deacon Travis Beck Director of Worship, Music, and Arts travis@molive.org Ext. 203
The Rev. Luke Hollander Associate Pastor of Children, Youth, and Family luke@molive.org Ext. 207	Bill Hollander Congregational Administrator bill.h@molive.org Ext. 204	Richard Bruxvoort Colligan Olive Branch Cantor richard@molive.org Ext. 210
Carrie Fletcher—Director of Service and Social Outreach and Nursery Coord. carrie@molive.org Ext. 209	Nancy Britson Director of Congregational Life nancy@molive.org Ext. 202	