

THE

# Messenger

February 2020

MOUNT OLIVE LUTHERAN CHURCH • ROCHESTER, MINNESOTA • 507-288-1580 • MOLIVE.ORG

*A Congregation of the Evangelical Lutheran Church in America*

During the season of Epiphany we have been reading texts from the prophet Isaiah who, over and over, tells us about God's desire for us to bring "light to the nations." This could mean bringing a word of hope or encouragement to people who are discouraged. It could mean being a companion or an advocate for someone who is alone or lacking in support. It could mean inviting someone to be part of the Mount Olive community and joining us in the joyful work to which God has called us.

What is clear is that we do not exist for *ourselves*. We are not a club to which we pay dues and from which we receive benefits. We are a faith community, called to sing God's love song to the world, and called to invite others to come and sing along with us.

In the season of Lent this year – which begins on **Ash Wednesday, February 26** – we will be inviting members of Mount Olive to let their light shine. During midweek services we will hear from all sorts of folks from many walks of life who will share with us what it means to them to bring God's love song to the world. Pastor Glenn, Intern Pastor Luke, and Deacon Travis Beck will join in interviewing folks each week, helping all of us broaden our understanding of how we live out our callings as people of God, called to bring God's light to the world.

**Ash Wednesday Worship** with (optional) Imposition of Ashes will be held at **5:00 and 7:00 pm**, with a light supper served between services by the Women of the ELCA. Each service will include Holy Communion. Guests are always welcome.

During the season of Lent, midweek worship will be held each Wednesday at 7:00, with a light supper served at 5:45. Pastor Glenn will be leading his Lenten Bible Study in the book of First Peter, each Wednesday, 6:00-6:45, and Sundays 9:15-10:15 am. Study guides are \$7. Please see the Gathering Area sign-up cabinet for payment envelopes and signup sheets.

Our hope for you this Lenten season is, as St. Peter said, "May grace and peace be yours in abundance." (I Peter 1:2)



## Announcing the birth of August Hollander Janke

January 10, 2020, 7 lb. 3 oz. 20 in.

Joyfully welcomed by:

Pastor Lisa Janke, Intern Pastor Luke Hollander  
and big sister Adie

### Inside This Edition:

Congregational  
Life  
page 2

Worship  
page 3

Service  
pages 4-5

Education  
pages 8-9

Fellowship  
pages 10-11

## This Day in Mount Olive History

The start of many Lutheran churches in the 1960's involved a pastor known as a Mission Developer. This pastor would accept a call from the Churchwide organization to organize a new congregation in a growing community. In 1960, Rochester was such a community. That year a number of Lutheran churches began in Rochester – Good Shepherd on the south side, and Mount Olive on the north. Rev. Don Johnson was called as the Mission Developer in February 1960 and began his work that spring. Pastor Johnson continued his work until October 1964, when Pastor Keith Beaver and his wife Mary arrived. We give thanks today for the ministry of Pastor Johnson, begun nearly 60 years ago.

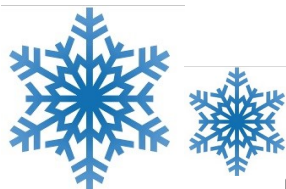
## ISAIAH Provides Caucus Training at Mount Olive

On Tuesday, February 4 at 6:30 pm, the Minnesota interfaith justice organization, ISAIAH, will provide a training in how to be an effective caucus attendee. Kathryn Lozada, Southern MN organizer for ISAIAH, will present the Faith Agenda, and equip us to be better advocates for those who continue to lack social or economic justice. The Rochester interfaith community is invited.

## Twelfth Night Potluck and Games

People of all ages enjoyed fellowship, food, and games at the Twelfth Night Celebration on January 5th. What

a great way to bring the Christmas season to a close!



## Mount Olive's Inclement Weather Policy



When the snow flies and the wind chill is -20 degrees, is there still quilting group? Bible study? Worship? Here are the quick guidelines for winter weather.

- If school is cancelled because of inclement weather, all weekday church activities, including evening activities, are cancelled.
- If school dismisses early and community evening events are cancelled due to poor weather, all evening church activities are also cancelled.
- Worship on Saturday night and Sunday is rarely cancelled. In the rare event that this occurs, we will have notification on our website, [www.molive.org](http://www.molive.org), our Facebook page, and on the KTTC television channel.
- Always use your judgment before driving in bad weather. If MNDOT advises no travel except in emergency cases, please assume that means church activities as well.

## Ash Wednesday Worship is February 26

The beginning of one of the most important seasons of the year for Christians is Ash Wednesday. This day marks the beginning of the 40-day season of Lent which precedes the Great Three Days of Maundy Thursday, Good Friday, and the Vigil of Easter. Our Ash Wednesday services will be held at 5:00 and 7:00 pm, with a simple soup supper served between services beginning at 5:45 pm. Each service will include (opt.) Imposition of Ashes and Holy Communion. See the complete schedule for the following weeks below:

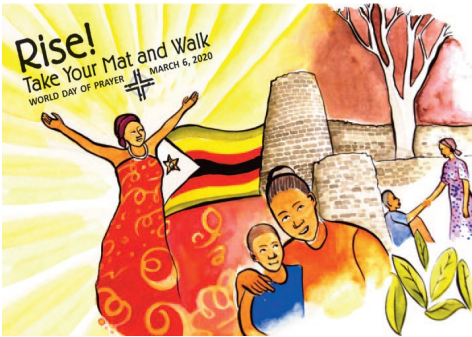


### Lenten Schedule

Ash Wednesday February 26	5:00 pm Worship with Imposition of Ashes 5:45 pm Soup Supper 7:00 pm Worship with Imposition of Ashes
Wednesdays beginning March 4	5:45 pm Soup Supper 6:00 pm Bible Study: <i>God's Own People-studies in 1 Peter</i> 7:00 pm Holden Evening Prayer service
Saturdays	5:00 pm Worship
Sunday Mornings beginning March 1	8:00 am Worship 9:15 am Bible Study: <i>God's Own People-studies in 1 Peter</i> 10:30 am Worship

## World Day of Prayer Hosted by Mount Olive Women

On Friday, **March 6, 2020**, Mount Olive will host a service for the World Day of Prayer, an ecumenical gathering of women. A continental breakfast will be served at 9:30 am followed by a program from 10:00 to 11:00 am. The theme is "Rise! Take Your Mat and Walk" and will focus on the story in John 5:2-9a of Jesus healing the paralyzed man. Our sisters from Zimbabwe are taking Jesus' encounter to be a call to act



in love for peace and reconciliation. Through the program of readings, song, drama, and a speaker, we will learn more about the country of Zimbabwe and how each of us can hear the words of this compassionate God to act upon the healing of ourselves and our communities to bring peace and reconciliation into the world. A freewill offering is collected. Please sign up in the Gathering Area if you can help by providing food for the breakfast, serving or cleaning up, or serving as an usher that morning. Contact Dorothy Ostrom with questions— 288-2297.

## Worship and Fellowship Volunteers Needed

Lent is a busy time with the need for many volunteers for all of our worship services and fellowship times! Mount Olive uses an online program, Sign Up Genius, to schedule volunteers. You sign up to serve at a day and time that works for you. The Sign Up Genius links are available via invitation and are also accessible from the Mount Olive website, [molive.org](http://molive.org) on the Service tab. You may also call Nancy Britson, Director of Congregational Life with your availability or to schedule a training as needed, 288-1580 ext. 202. Your help is sincerely appreciated!

## Altar Flowers

You may sign up to provide the flowers to brighten the sanctuary each week. Place orders for birthdays, anniversaries, baptismal birthdays, births, or in memory of loved ones. Sign up in the Gathering Area, fill out an envelope and include payment. Place orders at least one week in advance. Bouquets are \$40 and bud vases range from \$7.50 to \$13.50.

## 2<sup>nd</sup> Sunday of Service

On the Second Sunday of each month, we are focusing our education hour on service. This month, on February 9, beginning at 9:15 am, we will assemble Lutheran World Relief Baby Care Kits. All ages are encouraged to participate. Throughout the year, members of Mount Olive have sewn and collected infant clothing for these Baby Care Kits that are shipped all over the world to mothers and their newborns. Thank you to everyone who has donated items for these kits. To learn more about LWR Project Promise, including where kits are helping, visit [build-kitsofcare.org](http://build-kitsofcare.org).



**Thank you** to all the students and adults who rolled bandages for Global Health Ministries for the Service Sunday on January 12. 179 bandages were rolled and sent to help those in 3<sup>rd</sup> world countries who are short on medical supplies.



## White Sheet Collection

During the month of February, please bring new and used white bed sheets and place in the wooden bin in the entryway. White muslin will also be accepted, but must be in 2 yard (72") lengths. Make sure used sheets and muslin are clean and placed in a plastic bag. These will be used to make bandages for Global Health Ministries, a Lutheran organization that provides medical aid to dozens of countries. Their motto is: *Helping the Hands that Heal*. Contact Sherry Will at [sherry@molive.org](mailto:sherry@molive.org) with questions.

## Food For Friends Update

The process for picking up and delivering the food to students in need at John Adams has changed. Food will be picked up from Channel One on Wednesday morning and delivered directly to John Adams Middle School. The food packaging is much smaller now and requires less space, so any size vehicle will work for transporting this. There is an updated sign-up sheet in the Gathering Area. If you are interested in helping with this ministry outreach, please contact Carrie Fletcher at [cxnfletcher@gmail.com](mailto:cxnfletcher@gmail.com) or (507) 272-1906.



**Special thanks to Warren Kemplin** who is retiring from the Food for Friends program after many years of service. His passion to care for those in need is always visible and the service he has done for Food for Friends has helped countless numbers of children receive food when they might go hungry. Thank you Warren, your many years of service are greatly appreciated.

## Tote Bag Making for Colombia

On Friday, February 21, 9:30-12:00 come join the fun and fellowship as tote bags are cut, sewn and assembled for the Mission Colombia 2020 Team to bring as gifts when they travel to Colombia in March. A light lunch will also be provided. Bring your sewing machine and fabric scissors if you have them, if not come anyway. Tote bag fabric will be supplied, but you are welcome to bring more. One tote bag can be made from  $\frac{3}{4}$  yard of 45" wide heavy-duty cotton fabric. RSVP to Sherry Will at [sherry@molive.org](mailto:sherry@molive.org) by February 18 or sign up in the Gathering Area.



## Thank You Family Promise Volunteers

Thank you to everyone that helped with the Family Promise host week January 26– Feb. 2! **Remaining 2020 hosting dates are:** May 17-May 24, August 16-August 23, and November 22-November 29.

## Lenten Food Drive for Channel One

The annual Lenten Food Drive for Channel One begins Ash Wednesday, February 26 and runs through Palm Sunday, April 5. During this time of year, the food supply is greatly reduced at Channel One Food Bank, so they can use the help of each and every one of us. In 2018, Mount Olive collected 1407 pounds of food and raised \$2419 for Channel One. We were ranked #8 for most donations in Minnesota by Minnesota FoodShare. In 2019, we collected 1263 pounds of food and raised \$2322 in donations and were ranked #6 by Minnesota FoodShare. It is our goal to have an equally successful food drive in 2020.

Each Mount Olive family is encouraged to bring a bag full of groceries and/or make a \$10 donation to Channel One. Beginning the middle of February, there will be a table in the front entry of the church with empty grocery bags and attached grocery lists to take with you as a reminder of the food drive. There will also be envelopes for monetary donations. All food donations should be non-perishable and have an expiration date that is later than June 2020. (**No glass please.**) Items can be placed in one of the blue barrels in the entryway. The following is a list of the most needed items: Canned tuna, ham and chicken, peanut butter, canned/dried beans, canned fruits, canned vegetables, rice, dried pasta, flour sugar, oil, personal care products. Contact Sherry Will at [sherry@molive.org](mailto:sherry@molive.org) with questions.

## Mount Olive Prayer Shawl Group

All knitters and crocheters are invited to attend our next meeting on **February 11** at 10:00 am. Yarn, needles, treats, and guidance are provided. The group meets from September to May to knit or crochet prayer shawls and hats. If you would like to join the group of knitters or would like to request a shawl for someone who is experiencing illness, loss, or a difficult time, contact Peg Whitley - [peg.whitley@gmail.com](mailto:peg.whitley@gmail.com) or call the church office at 288-1580.



## Save the Date

Women's Day of Service is Saturday, March 21, 9:00 am-1:00 pm. Please contact Sherry Will at [sherry@molive.org](mailto:sherry@molive.org) or Regina Seabrook at [rseabroo@gmail.com](mailto:rseabroo@gmail.com) with project ideas, or if you have any questions about this special service day.



## Mount Olive Quilters

The quilters meet each Thursday morning at 9:00 am in the Fellowship Hall to prepare and tie quilts. Everyone is welcome to join them; no sewing experience is required. The quilts are given to Lutheran World Relief, Families First of MN, the Good Earth Village auction, and more. The group can always use donations of cotton fabric. Please bring on Thursday mornings or leave in the Gathering Area cabinet. Monetary donations for the purchase of batting and other supplies are also welcome. If you have any questions, call Sandy Schlenker at 507-529-8215.

## Dorothy Day Volunteers Needed



Volunteers are needed to serve the evening meal the first Friday of each month for guests staying at the Dorothy Day Hospitality House, a temporary homeless shelter in downtown Rochester. Volunteers provide and share a family-style meal with the guests in the home's dining room. We are currently in need of volunteers for **March 6 and April 3**. Sign up in the Gathering Area where you will find more information. Contact Jene Bodenstener at [jbode6@me.com](mailto:jbode6@me.com) with questions or to volunteer.

## Sunday Forums Provide Variety

The Sunday Forums, most Sundays at 9:15 am in the Fellowship Hall, provide a chance to hear about and discuss a wide variety of topics from the work of ministry partners to global theology. We will have a wide variety of offerings in February:

**February 2** – A Study of Generations by Barb Sorensen

**February 9** – Service Sunday for Lutheran World Relief

**February 16** – Mission Colombia: Members of the Mount Olive team leaving for Colombia on March 26 will present their plans and hopes for this mission trip.

**February 23** – Interfaith Dialogue with our Muslim, Jewish, Buddhist, and Sikh friends around the subject of evil and how to overcome it.

## Faith Seeking Understanding (FSU) Meets February 4

Faith Seeking Understanding reads and shares conversations about a variety of books and videos on theology, spirituality, social justice, and Christianity and our changing church. The next meeting is on Tuesday, **February 4** at 6:30 pm. This month's book selection is ***The Latehomecomer: A Hmong Family Memoir*** by Kao Kalia Yang. Thousands of Hmong families made the journey from the war-torn jungles of Laos to the refugee camps of Thailand and onward to America. But lacking a written language of their own, the Hmong experience has been primarily recorded by others. In *The Latehomecomer*, Kao Kalia Yang's was driven to tell her family's story after her grandmother's death. All are welcome to attend.



## Pastor Glenn Leads Lenten Study

Pastor Glenn's Lenten Bible Study this year will be a study of the book of First Peter. According to the *Lutheran Study Bible* the message of 1<sup>st</sup> Peter is this: "Jesus' suffering, death, and resurrection provide new life and living hope to believers. We are called to live as chosen people, God's servants, and stewards of grace. We are also called to the community of faith, which is a spiritual house of living stones, a holy priesthood, and God's own people." You are invited to join the study and be inspired to live out your own call as God's own people. Books are \$7 and signup sheets and payment envelopes are available in the Gathering Area at church. This study will be held Sundays at 9:15 and Wednesdays at 6:00 pm, beginning March 1.

## Pub Theology Monday Evenings

With Pastor Lisa on leave, Deacon Travis Beck and Intern Pastor Luke Hollander are leading Pub Theology. We gather Mondays at Fiddlehead Coffee Co., 412 3rd Ave SE. Come at 5:30 pm for casual conversation, along with food and drink as desired, and our discussion takes place from 6:30 to 7:30 pm. With February comes Valentine's Day. Inspired by that, this month's Pub Theology themes will be exploring theologies of love and relationships, as well as the breakdown of human relationships. We'll explore the different types of love mentioned in the Bible: *agape*, *eros*, *philos*. We'll wrestle with issues of marriage and divorce; for example, what do we mean when we say "those whom God has joined together, let no one separate"? Do we conceive of God as a divine matchmaker? And in order to have a theology of marriage, does the church need to have a theology of divorce? All this and more will be up for discussion this month; we hope you'll join us. You can find out weekly topics on our blog: [rochesterpublictheology.wordpress.org](http://rochesterpublictheology.wordpress.org). Sign up directly on the blog to get updates by email, or ask [Travis Beck](#) for help doing so.



## Pre-Colorado Trip Planning

All youth attending the Colorado trip this summer, along with their parents, are encouraged to attend our first big pre-trip planning meeting on Wednesday, February 19, 6:00 – 7:30 pm. Intern Pastor Luke will order pizza for the youth. For the first 15-30 minutes we will meet as a large group to go over some details around the itinerary, travel plans, release forms, necessary equipment and staying hydrated. Then we will start our Going to the Mountain Bible Study. At this point, parents are welcome to stick around for conversation and fellowship, or they can head out to run errands if they need to. We will conclude by planning and preparing for our Mardi Gras fundraiser. This will be a great community building meeting!

## March 7 Youth Lock-in

Ok, let's try this again. We are going to have a night full of fun! Middle and High school youth are invited to participate in a lock-in at Mount Olive on March 7 starting at 5 pm. We plan on playing hide-and-seek, video games, board games, and more! We will have dinner and snacks. There will be team building activities, the fun kind, don't worry. Late night popcorn and a movie are on the agenda. Who knew so much fun and activity could be packed into one night? Now that intern Luke has a new baby, he is used to staying up all night and will be ready to go. Please sign up in the Gathering Area.

## 144 Envelopes! Youth Fundraiser

Our youth are headed to Colorado this summer for a once-in-a-lifetime experience. This trip gives youth a chance to explore their faith, build community, and have a mountainous adventure seeing God's beauty from a new perspective. The envelope fundraiser has been off to a great start. Over \$3,200 collected and another \$1,000 pledged. A huge thank you to those that have already contributed! If we can fill all of the envelopes we will raise over \$10,000 and most of the trip will be covered for our youth! Please prayerfully consider supporting our youth on this trip.

## Sunday School Offering: Teaching Generosity

Generosity is essential to creating positive community. It can reduce stress and support physical health. Generosity leads to a more meaningful life and improves relationships. Plus it is something that can and should be taught. During the month of February, we are going to have a friendly competition in our Sunday school classes. Whichever class can raise the most money per student in the month, will get some home-made treats from Intern Pastor Luke and the Youth Board to enjoy during Sunday school. All money raised will go to our youth program. So send your loose change and dollars and start teaching your kids how to be generous!



## Family Ice Skating Fun For All!

Families had a great afternoon ice skating at the Rec Center on January 12.





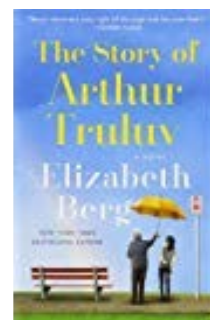
## “Hymns and Hops” Hymn Sing February 8

Mount Olive will be hosting a hymn sing at Little Thistle Brewery, 2031 14th St NW, on Saturday, **February 8**, 7:30-9:30 pm. **ALL** are welcome to partake regardless of singing abilities or beverage preference. Craft brews and sodas will be available for purchase. This time of fellowship is designed to rejuvenate the spirit during these frigid winter months, while experiencing God’s

presence through song and community. A free will offering will be collected and funds will be used by Mount Olive Women of the ELCA to explore how to best support current and prospective ELCA members from steadily declining demographic populations. Childcare will be provided in the Mount Olive nursery for this event; drop off begins at 7:00 pm. **Please sign up in the Gathering Area, indicating if you will be using childcare and the number and ages of children.** Contact Marisa Rueda Will- [ruedma01@gmail.com](mailto:ruedma01@gmail.com) or Nancy Britson – [nancy@molive.org](mailto:nancy@molive.org) with any questions.

## Monday Book Group

The Monday Book Group gathers on **February 10** at 6:30 pm, in the library, for their monthly book discussion . The February selection is *The Story of Arthur Truluv* by Elizabeth Berg. Arthur Moses’s days each looked the same: He tends to his rose garden and to Gordon, his cat, then rides the bus to the cemetery to visit his beloved late wife for lunch. The last thing Arthur would imagine is for one unlikely encounter to utterly transform his life. The story is a beautiful and moving novel of compassion in the face of loss, of the small acts that turn friends into family, and of achieving happiness at any age. New readers are always welcome to join the group. Contact Jodi Schoer for more information, [mjschoer@charter.net](mailto:mjschoer@charter.net) or 288-1951.



## Ripe Olives Meets February 14

On Friday morning, **February 14** at 9:30 am, the Ripe Olives, Mount Olives group for retired folks, will gather. Mount Olive members Glenn and Nancy Wiitanen recently travelled to Australia and New Zealand. Come to learn more about both places by seeing photos and hearing details about their trip. It will be a timely topic as Australia has been so much in the news of late. Breakfast will be provided with a freewill donation at 9:30 am. Guests are always welcome. Sign up at the Gathering Area cabinet. Contact Nancy Britson with questions 288-1580 ext. 202 or [nancy@molive.org](mailto:nancy@molive.org).

## Scout Pancake Breakfast February 2

Following both services on February 2<sup>nd</sup>, the scouting groups from Pack, Troop, and Crew #498 that meet at Mount Olive will host a pancake breakfast. Come and enjoy pancakes, sausage, juice, and coffee. A free-will offering will be collected to support the scouts as they plan for a summer trip to Philmont Scout Reservation.



## Lenten Meals Begin February 26

Each week during Lent will feature a soup supper or simple meal served on Wednesday evenings at 5:45 pm. Everyone is welcome to attend without reservation. The first meal will be sponsored by Mount Olive Women of the ELCA and served between the 5:00 pm and 7:00 pm Ash Wednesday services on February 26. Beginning March 4, participants in the Lenten study can get their meal on a tray to take with them to the Library. A free-will offering will be collected each week benefitting different groups at Mount Olive including the Colombia Mission Team and Mount Olive Youth or be contributed to ELCA World Hunger. Volunteers will be needed each week. Please watch the Gathering Area sign up counter or contact your group leader for more details. You may contact Nancy Britson with questions— [nancy@molive.org](mailto:nancy@molive.org).



## Mount Olive Mardi Gras

On Sunday, **February 23** following the second service, Mount Olive will be hosting its own Mardi Gras party before we begin our Lenten journey. Mount Olive middle and high school students going to Colorado this summer will help serve a pancake brunch and take a free-will offering as a fundraiser to support their trip. A Dixieland band led by Travis Beck will entertain us with live music during the event. In addition, there will be lots of fun carnival-style games and crafts to give a real Mardi Gras feel. We hope to see you at the party!

## 20 & 30 Somethings Fellowship at LTS

It has been too long since the young adults at Mount Olive have gotten together. If you are finding it hard to get out during this winter, this fellowship time should motivate you to get out of the house. We are going to grab a favorite drink at Life's Too Short Brewery, 2001 32nd Ave NW on **February 24** at 6:30 pm. Then we will enjoy conversation together and can even play some board games. Pastor Luke is looking forward to this time together!

## Little Leapers Meet February 16

Little Leapers, a group for parents and children who have not yet started Sunday school, meets on Sunday, **February 16** at 9:15 am. Parents join together to share in caring conversation and fellowship as the little ones take a leap into faith. Follow the green frogs on the signs in the entry and hop on down to join the group in classroom 13 in the Education Wing! If you have any questions about this group, please contact Kaitlin Maus at: kaitlinridl@gmail.com.



## Mount Olive Quilters and Crafters Retreat

**Friday, February 28, 12:00 pm – Saturday, February 29, 4:00 pm**

**Mount Olive Fellowship Hall Cost: \$25 for both days**



Join your friends at Mount Olive for a fun and relaxing weekend of sewing, knitting, scrap booking, or crafts on February 28 and 29. What a great opportunity to catch up on your projects in the company of others. If you do not have projects of your own, there will be Lutheran World Relief and Mount Olive quilters items to work on. Meals are provided. Feel free to invite friends! Pick up a registration form with all of the details on the Gathering Area sign-up counter or in the office. Return your registration and payment by Feb. 23rd. Contact Nancy Britson in the Mount Olive office with any questions—507-288-1580.

## Pops Orchestra February Concert

The Rochester Pops Orchestra, under the direction of Brock A. Besse, presents: "*Contemporary Classics*" Sunday, **February 16, 2020, 3:00 pm** at Bethel Lutheran Church, 810 3rd Avenue SE. Join the Rochester Pops Orchestra as they present a concert dedicated to musical selections created between 1950 and the present day.

Composers featured include John Williams, Eric Whitacre, Carl Davis, Aaron Copland, David Matthews, and more. Tickets are available now at [rochesterpops.com](http://rochesterpops.com) or by calling 507-318-0801. Tickets will also be available in the Gathering Area following services through February 9 and at the door the day of the concert.



## Women of the ELCA National Gathering Planned for July 2020

On July 16-19, 2020, the Women of the ELCA nationwide gathering will be in Phoenix, Arizona. Registration is now open. Mount Olive Women of the ELCA offers scholarship funds to divide among the members who wish to attend. Worship services, informational sessions, Bible study, and active events are planned as a way for women across the country to learn their place in the body of Christ. For more information about the gathering, Women of the ELCA, or to join one of the small groups, please contact Regina Seabrook at [rseabroo@gmail.com](mailto:rseabroo@gmail.com) or 651-285-3912.



[www.womenoftheelca.org/  
new-triennial-event-page](http://www.womenoftheelca.org/new-triennial-event-page)

## Annual Reports Available

Thank you to everyone who attended the Annual Meeting on January 26. Thanks also to the 60th Anniversary team for providing the meal. Annual reports are available to pick up in the church office or electronically by emailing [nancy@molive.org](mailto:nancy@molive.org).

## Women of the ELCA Board Meeting

Mount Olive's Women of the ELCA board will meet at 11:30 am on Sunday, **February 2**. All circle leaders and women's ministry leaders are encouraged to attend. Any interested women may attend to help with planning for spring and summer events. Please contact Regina Seabrook, President of Mount Olive WELCA if you have questions- [rseabroo@gmail.com](mailto:rseabroo@gmail.com).

## Family Circle Learning Center Offers Discount

The new daycare center housed at Mount Olive, Family Circle Learning Center, sponsored by Families First of MN, is now taking pre-registrations for infants, toddlers, and preschoolers. **Mount Olive members receive a 20% discount.** Go to [familycirclelearningcenter.com](http://familycirclelearningcenter.com) to pre-register. Informational flyers are available at the sign up counter in the Gathering Area. Family Circle also has openings for staff at the Mount Olive center. Please contact Sarah Klocek, center director for more information-[sarahk@familiesfirstmn.org](mailto:sarahk@familiesfirstmn.org).

## Mount Olive's Welcome Statement:

*"We trust that God calls Mount Olive Lutheran Church to a ministry of reconciliation. We embrace as a gift the diversity of our neighborhood and the world, and we extend God's hospitality by welcoming, hearing, and treasuring:*

*All gender identities and sexual orientations*      *All races and ethnicities*  
*All ages and abilities*      *All economic statuses and education levels*  
*All faith journeys and personal histories*

*As Christ welcomes all, we too welcome the full inclusion of all people into the life, ministry, and sacraments of Mount Olive, joining in a journey toward greater love, understanding, and mutual respect."*



## Mount Olive Lutheran Church

2830 18th Ave. NW  
Rochester, MN 55901  
507-288-1580 Website: [molive.org](http://molive.org)



A Reconciling in  
Christ Community

## Mount Olive Staff

<b>The Rev. Dr. Glenn Monson</b> Senior Pastor <a href="mailto:glenn@molive.org">glenn@molive.org</a> Ext. 206	<b>The Rev. Lisa Janke</b> Associate Pastor of Outreach <a href="mailto:lisa@molive.org">lisa@molive.org</a> Ext. 205	<b>Deacon Travis Beck</b> Director of Worship, Music, and Arts <a href="mailto:travis@molive.org">travis@molive.org</a> Ext. 203
<b>Intern Luke Hollander</b> Intern Pastor of Children, Youth, and Family <a href="mailto:luke@molive.org">luke@molive.org</a> Ext. 207	<b>Bill Hollander</b> Congregational Administrator <a href="mailto:bill@molive.org">bill@molive.org</a> Ext. 204	<b>Sherry Will</b> Director of Missions and Service <a href="mailto:sherry@molive.org">sherry@molive.org</a> Ext. 210
<b>Carrie Fletcher—Administrative Assistant and Nursery Coordinator</b> <a href="mailto:carrie@molive.org">carrie@molive.org</a> Ext. 209	<b>Nancy Britson</b> Director of Congregational Life <a href="mailto:nancy@molive.org">nancy@molive.org</a> Ext. 202	