

THE

# Messenger

December 2018

MOUNT OLIVE LUTHERAN CHURCH • ROCHESTER, MINNESOTA • 507-288-1580 • MOLIVE.ORG

*A Congregation of the Evangelical Lutheran Church in America*

## A Quiet Christmas

This year at Mount Olive we will be observing a quiet Christmas. When you come to Christmas Eve services it may even feel a bit like an Advent service as we begin with the Procession of Light. Oh, we will sing some of our favorite carols and enjoy the retelling of the Christmas story, and there will be the lighting of candles while we hear the familiar strain: Silent night, holy night! All is calm, all is bright. But there will be no grandiose “Joy to the World!” as a finale. It will be a quiet Christmas.

It seems only right that this year Christmas should be quiet. Why? Because of the quiet that now exists in Mexico Beach, Florida where Hurricane Michael wiped out the entire town. Because of the quiet in Paradise, California, where nothing is left after wildfires destroyed the town, and many died. Because of the quiet that lingers in the homes of some of our members and loved ones who have buried dear ones, young and old, this year. We are quiet with these beloved ones, for we know that for them Christmas will be quiet this year.

But one more thing; do not mistake our quiet for despair. We are not despairing. No, we are people of faith, who suffer and die and yet continue to believe in the Christ who is continually making all things new. We shall listen once again as the angel says to the shepherds and to us, “Fear not, for unto you is born this day in the city of David, a Savior who is Christ the Lord!” And through our tears, we will rejoice.

A blessed Christmas to you all.

Pastor Glenn



*Christmas Eve  
Festival Worship Services  
4:00 pm—Candlelight Service with  
Bells and Brass*

*7:00 pm—Candlelight Service with Choir*

### Inside This Edition:

Congregational Life  
page 2

Worship  
page 3

Service  
pages 4-5

Education  
pages 6-7

Fellowship  
pages 8-9

## Stewardship Update

Hello Mount Olive! As of November 19, 2018, here is where our pledging is along with the comparison to where we were by the Annual Meeting in January:

	2017	2018	change
Pledge Cards Received	149	132	-17
General Fund	\$ 512,000.00	\$ 407,800.00	- \$104,500
Building Fund	\$ 110,000.00	\$ 85,200.00	-\$ 24,800.00

Thank you to the new members who have pledged and to members who are first-time pledgers! There are also many people who have increased their pledges for this next year! Thank you! On a different note: We have substantially increased our benevolence of the past few years. Without adequate pledging, our benevolence will suffer. Please take this into consideration. Your pledge will go a long way to help meet the benevolence goals that the Church Council is aiming for. **To everyone – Thank you!**

## Call Committee has New Names

The synod office continues to scan the field to find candidates to forward to us to consider for our vacancy at Associate Pastor. We continue to believe that God's Spirit is leading us as we go through this waiting process, confident that when the time is right, things will fall into place. We are thankful for your prayers and for your patience as we await God's leading. Members of the committee are Terry Krieger (chair), Nicole Pierson, Grace Freed, Andy Hamann, Brandi Smith, Heather Klavetter, and Jake Johnson.

## New Members Welcomed

Twenty new members were welcomed into the congregation on November 11. Please introduce yourself and give these folks a warm welcome to Mount Olive. New name and number directories have been printed. You may pick one up from the counter in the office or contact the church office for a digital version. Brochures outlining the new members are available on the Welcome Desk.

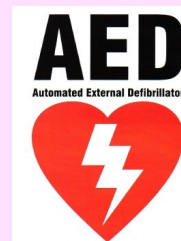
- Logan and Kristin Block
- Cori King
- Nathan, Kristin, Noah, Ian, & Emily Mannix
- Andy, Katie, & Grace Tofilon
- Jeff, Ashley, Riley, & Brady Grossbach
- Randy & Liz Knutson
- Mark & Anne Schwartz
- Bryce Wibben

## Lyra Baroque Orchestra Presents Bach's Christmas Oratorio

On Friday, **December 7** at 7:30 pm, Mount Olive is privileged to host the Lyra Baroque Orchestra in conjunction with the chorus of the Bach Society of Minnesota in a performance of Bach's Christmas Oratorio. You won't



want to miss this dynamic collaboration performing J.S. Bach's Cantatas I, II, IV, & VI. Tickets are available at [lyrabaroque.org](http://lyrabaroque.org) or at the door - \$5-Student, \$20-Senior/MPR member, \$25-Adult.



The Facilities Team is planning to purchase an AED (automated external defibrillator) for Mount Olive. This was not a budgeted item. About half of the total cost (\$1,700) has been contributed. If someone were to have a coronary event at Mount Olive, an AED could be the difference between life and death. If you are interested in contributing to this ongoing effort, it would be greatly appreciated. See Bill Hollander if you have questions.





## “Merry Christmas” to our Global Partners in ministry

Pictures above were taken on Sunday, November 11, and will be shared with our partner congregations and synods in Tanzania and Colombia. They were sent along with the cards made on the service Sunday.

## The Christmas Tree

The Christmas tree for the Mount Olive sanctuary has been donated by Ramona Purnell in memory of Dr. Don Purnell and Larry Larsen, and in honor of her daughters, Emily and Erin, and their families. Thank you Ramona, for sharing this symbol that reminds us that the arrival of Christ in our world brings light and life to all who need it most! Special thanks also to all of the altar guild members for preparing the sanctuary for Advent and Christmas.



## Christmas Eve Worship

For centuries, followers of Jesus have gathered in candlelight to remember and celebrate the mystery of Christ’s incarnation. Come join us as we continue this tradition proclaiming Christ’s presence in our lives. Services are family friendly and include Holy Communion.

On **December 24**, evening Festival Christmas Eve services are at 4:00 pm (a candlelight service with bells and brass) and at 7:00 pm (a candlelight service with choir). We hope you can join us.

## Worship Volunteers Needed

Many worship volunteers are needed for week-end and Christmas Eve services in December. Keeping the services running smoothly takes many participants. Have you considered helping out? There is a particular need for communion assistants, ushers, and acolytes. All of those that serve are so appreciated! If you are available to join the team of volunteers at Mount Olive, please contact Nancy Britson, Director of Congregational Life, 288-1580 ext. 202 for more information. **There will be a brief training for new volunteers offered immediately following services on December 2<sup>nd</sup>, please come to the sanctuary to learn a new skill!**

## Altar Flowers and Poinsettias

The 2019 schedule is now available to sign up to provide the flowers that brighten the sanctuary each week. Place orders for birthdays, anniversaries, baptismal birthdays, births, or in memory of loved ones. Sign up in the Gathering Area, fill out an envelope and include payment. Place orders at least one week in advance. Bouquets are \$30 and bud vases range from \$7.50-\$13.50. You may order poinsettias to beautify the sanctuary for Advent and the Christmas season for \$8. Pick up an order envelope from the table in the entry or contact Nancy in the church office. Orders will be due by December 2.



## 2<sup>nd</sup> Sunday Service Project- Christmas Cards

On November 11, the Sunday school children participated in making Christmas cards to send to the children at our partner congregation, Lluvia de Gracia, in Bogota, Colombia. It was an enjoyable activity with stickers, construction paper, glue sticks, and glitter. 60 cards were made in all. 15 were sent to the children at our partner congregation, and the rest to Lutheran Immigration and Refugee Service, where they will be given to refugee children who have come to the United States. A special thank you to Linda Schueler for organizing such a fun, colorful activity.

The middle school youth also took on a special service project, which was taking donations for ELCA Good Gifts for God's Global Barnyard. This is a great gift giving option for Christmas. Special thanks to Carrie Fletcher, and the youth who participated in raising \$2,370 for this worthy cause.



In addition to the cards made by the children, large cards with photos from past mission trips were signed by Mount Olive members and sent to our partner churches in Colombia and Tanzania, and to the bishops in both these regions. The congregation also had fun squeezing together at both Sunday services on Service Sunday for group photos which were also sent to Colombia and Tanzania. (see page 3)

### Family Promise Hosting Week

Mount Olive's next **hosting** dates for homeless families are December 9-16. Many volunteers are needed for hosting, meals, and transportation. Please sign up online (the link is available on the Service tab at [molive.org](http://molive.org)) or at the table in the entry. Contact Erin or Jason Sinnwell with any questions-

[etracy515@hotmail.com](mailto:etracy515@hotmail.com)



### Salvation Army Bell Ringing

A group from Mount Olive will make a difference in the lives of those in need by ringing bells for the Rochester Salvation Army Red Kettle Christmas Campaign. Mount Olive's volunteer date is Saturday, **December 1**, 1:00-3:00 pm. This year we will be at the Hy-Vee at 4221 West Circle Dr. The sign-up sheet is full, but you can still help by choosing your own time slot at

[www.registertoring.com](http://www.registertoring.com).



DOING THE  
MOST GOOD

### The Mitten Tree

With colder weather approaching, many children will be searching their closets for winter gear and coming up short. In November and through the Advent season, the Mitten Tree will be on display in the Gathering Area. Take one of the paper ornaments from the tree, purchase the item indicated on the ornament, and place it under or on the tree. Keep the ornament for your Christmas Tree at home. Elementary through middle school sized coats, snow pants, snow boots, hiking boots, wool socks, hats and/or mittens are the items needed. The goal of this ministry is to help kids at Elton Hills, John Adams, and the Alternative Learning Center stay warm over the winter by providing them with appropriate gear. Contact Ann Willis with any questions—[ewillis@charter.net](mailto:ewillis@charter.net).





## Sewing Days- Kijota and Rochester

On November 8, several Mount Olive women gathered for a sewing day to complete the construction of the stoles started by our sisters at Kijota Parish in Tanzania on October 5. What an exciting opportunity to share in a project with our partner church across many miles. The 23 stoles will be presented to the newly graduated seminary students from Kiomboi Lutheran Bible Institute. Bishop Steve Delzer will present them in person at their ordination in December. A special thanks to those who participated!



## Mount Olive Prayer Shawl Group

All knitters and crocheters are invited to attend our next meeting on **December 11** at 9:00 am. Yarn, needles, treats, and guidance are provided. The group meets from September to May to knit or crochet prayer shawls and hats. To request a shawl for some-

one who is experiencing illness, loss, or a difficult time, contact Peg Whitley - [peg.whitley@gmail.com](mailto:peg.whitley@gmail.com), or call the church office at 288-1580.



## Mount Olive Quilters



The quilters meet at 9 am each Thursday in the Fellowship Hall. They are grateful to have had several recent donations

of fabrics. They have pressed and cut the fabric and put together packages of quilt squares that need to be sewn together. Pick up a package or two to sew from the bin in the Gathering Area cabinet; directions are included. If you have any questions, call Sandy Schlenker at 529-8215.

## Food for Friends Drivers and Packers Needed

The Food for Friends Program is underway again this school year. Each Thursday, bags of food are delivered to hungry children at John Adams Middle School. Volunteers are needed to pick-up the food from Channel One during the day on Wednesday, package the food into grocery bags on Wednesday evening at Mount Olive, and deliver the tubs of packaged food to John Adams on Thursday morning. Each task only takes a few minutes of volunteer time, but is so needed. Sign-up forms for these tasks are available in the Gathering Area. Thank you to everyone that supports this effort. If you have questions or need a replacement in the case of a conflict contact: Warren Kemplin @ 507-282-9645.

## Sunday Forums

There are only two forums in December, but both promise to be very interesting. All are welcome to grab a cup of coffee and join each Sunday at 9:15 am.

- Sunday, **December 2<sup>nd</sup>** - What is a hymn? Why do we sing them? How are they chosen each week? Why isn't "Onward Christian Soldiers" in the cranberry hymnal? Deacon Travis Beck will explore these questions and more in this forum on hymnody. Grab your coffee and gather in the Fellowship Hall at 9:15 for conversation, learning, and a bit of singing!
- On Sunday, **December 9<sup>th</sup>**, Pastor Glenn will lead the second in a two-part series entitled, "My Neighbor is Muslim."
- On Sunday, **December 16<sup>th</sup>** we will all gather in the Sanctuary to enjoy the Sunday School Christmas pageant, *The Hope of Christmas*.

## Advent Resources

The first Sunday of Advent is December 2nd. Visit the table in the entry where you will find resources for all ages. There are regular and large print devotions for adults. For families, you will find *Advent A to Z*, a daily prayer and paper chain activity. There is also an Advent Faith practices calendar tucked into each family devotion.

## Little Leapers

Little Leapers is a fellowship group for parents and their children who have not yet started Sunday School. Their next meeting date is Sunday, **December 16**.

On this date, the group will attend the children's Christmas program together.

Seats will be reserved for the group in the front of the Sanctuary so the little

ones can see and hear the older children's program. On January 20, the group will again gather in **The Pond** at 9:15 am. Contact Serena Oudekirk for more information: [serena.oudekirk@grarate.com](mailto:serena.oudekirk@grarate.com).



## Men's Discipleship

The Men's Discipleship group continues their study of Matthew on Saturday mornings at 8:30 am in the front Conference Room. This group, open to all men of the congregation, meets every Saturday morning during the program year for Bible study, discussion, and fellowship. Contact Mark Masbruch for more info. - [mmasbruch@hotmail.com](mailto:mmasbruch@hotmail.com). **Note that the group does not meet on December 22<sup>nd</sup> or 29<sup>th</sup>.**

## Pastor Glenn Teaching Again in January

Perhaps you noticed that this past fall Pastor Glenn did not lead his regularly scheduled Bible study. This was due to the pastoral vacancy as he was needed for other duties. In January, he will again offer an adult study in the Book of Hebrews. This study will focus on the person of Jesus and the nature of faith. This study will be held on Wednesday evenings 6:30-7:30 for six weeks, starting January 9. Books are \$7. You may sign up in the Gathering Area at church. All older youth and adults are welcome.

## Women of the ELCA - Important Dates:

**December 3** - Women's Christmas Party hosted by Mary Circle

**December 9** - St. Lucia Sunday sponsored by Naomi, Rachel, and Miriam circles.

**January 8** - Monthly study leader preparation with Pastor Glenn in the front Conference Room at 5:30 pm. Bring your Gather Magazine and a Bible. (Delayed one week due to New Year's)

**January 13** - Board meeting at 11:45 am, meet in the front Conference Room

**January 27** - Women serve lunch for the Congregational Annual Meeting. Watch for the sign up sheet in the Gathering Area after Christmas.



## A Little Hope for Christmas!

Please join Mount Olive's children and youth on **December 16<sup>th</sup>** as they tell the story of Christmas with a modern twist in *The Hope of Christmas*. The performance will take place beginning at 9:15 am in the Sanctuary. This year, our Christmas Program was written by Mount Olive's own, Jessi Hafeman, and directed by Dawn Farr. The children and youth have been working extremely hard, so please come to enjoy a new telling of the Christmas story.

**There will be a dress rehearsal for all Sunday school students on December 15th at 10:00 am.**



## Mount Olive Youth Boards

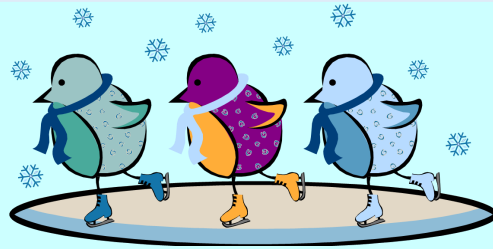
The Mount Olive Youth Boards for Middle school and High school students have been formed and are beginning to meet. We will be planning fellowship activities for December and January. If your student has any ideas for fellowship activities they would enjoy or would like to be involved on the boards, please contact Kailea by phone: (507) 288-1580 ext. 207 or email: [kailea@molive.org](mailto:kailea@molive.org). Watch the bulletin for more details about upcoming events.

## Metamorphosis Update

Metamorphosis has finished up its Fall unit and is on a break for the Advent season. During our Fall unit we heard stories about Jesus from John's Gospel. Please mark your calendars for **January 9** for when we begin our Winter unit on justice. Dinner is at 5:30 pm and class begins at 6:00 pm.

## Middle School Skating

Kailea would like to invite all 6-8<sup>th</sup> grade students to join her at the Rochester Recreation Center on Saturday, **December 15<sup>th</sup>** to go ice skating during their open skate time. Drop your student off at the Rec Center entryway at 11:20 am to meet Kailea. The cost is \$4.00 to skate and \$2.00 to rent skates. Please sign up in the Gathering Area.



## Youth Trip Fundraisers

The Middle School and High School Youth are planning a service trips through Youth Works for the summer of 2019. In order to help cover costs of the trip, they have planned two fundraisers to take place during December.

### • Parent's Night Out on December 14<sup>th</sup> at 6:00 pm

Parents, feel free to drop off your children (3 year olds-5th grade) and go out for the evening. Kids will watch a movie and have snacks in the Fellowship Hall. Please return to pick up by 9:30. Free-will donations are appreciated and will offset trip costs.

### • Youth Bake Sale on December 16<sup>th</sup>

Please come, following the services and the Christmas program, to support our youth as they prepare for their summer service trips. Please sign up in the Gathering Area to contribute baked goods, candies, etc.



## Holiday Gathering for Post High School Youth

Post High School youth who are attending college or working are invited to meet for lunch at Applebee's North on Saturday, December 22<sup>nd</sup> at 11:30 am. Please RSVP by December 15 to Gloria Schad at [mgschad@gmail.com](mailto:mgschad@gmail.com) or 226-4319. Thanks to Miriam Circle for organizing.





## Ripe Olives Celebrate the Christmas Season

Ripe Olives is a group for Mount Olive's most experienced members, mostly retired folks. They meet the first Friday of the month September through May for fun and fellowship! On **December 14**, Travis Beck will be our guest with some delightful Christmas music and a little history of some of our favorite Christmas songs. Breakfast will be provided with a freewill donation at 9:30 am and the program will begin about 10:00. Sign up at the Gathering Area table. Contact Nancy Britson, Director of Congregational Life, with questions 288-1580 ext. 202 or [nancy@molive.org](mailto:nancy@molive.org).



### Adventure Club News

The Mount Olive Adventure Club is a diverse and dynamic group of people of all ages that enjoy exploring a wide variety of activities. Be sure to pick up a Fellowship brochure to read about everything that is planned for 2018-2019.

#### • December 8-Adventure Club Outing to *Annie*

A group of adventurers will attend a sold out performance of *Annie* on Saturday, evening, **December 8** at 7:00 pm. Tickets have been distributed to those attending.

#### • December 16-Christmas Caroling for All

A great tradition at Mount Olive is our annual caroling outing to local senior care facilities just prior to Christmas. Those who carol, those who sing along, and those who listen are all blessed. Plan now to join people of all ages as we gather to carol on Sunday, **December 16**. We will meet at the Mount Olive parking lot at 1:30 pm to carpool to facilities that are home to some of our members. After caroling, we will go back to the Fellowship Hall to enjoy some Christmas treats and hot chocolate. Please bring a treat to share. Sign up in the Gathering Area.



#### • January-Ski Trip-Save the date for Skiing at Welch Village on **January 21**. It is the Martin Luther King holiday, so there is no school. Watch for more details to come in the bulletin and *Messenger*.

### Our Scout Partners

Many weekday evenings, Mount Olive is bustling with activity as our partner scout group, #498, meets. In October and November, they were also visible on weekends serving at Mount Olive and in the community. Below is an update from their leaders:

**Pack** – November 3<sup>rd</sup> and 10<sup>th</sup> was Scouting For Food. The first weekend door hangers were distributed and the following weekend food was collected for Channel One!

**Troop** – On October 20<sup>th</sup>, approximately 80 bags of leaves were gathered from the yard at Mount Olive. A picture of the group with one of four truckloads that went out to the compost site is on the right.

**Crew** – On October 21<sup>st</sup> the crew had a pancake breakfast at Mount Olive and raised \$300 towards next summer's high adventure trip to Northern Tier in northern MN. Thank you and we will be back in February for another pancake breakfast!







The Tanzanian Christmas Tree

*Come and Celebrate!*  
**Mount Olive Women's Christmas Evening**  
**Monday, December 3, 2018 @ 6:30 pm**

**All women** of the congregation are invited to this special gathering to begin the Christmas Season. Mount Olive women, Sherry Will and Karen Masbruch, will tell more about the projects they accomplished with the women of Tanzania for the evening program. As usual, delicious food, Christmas music, and lots of fellowship time will be included. There will be a free will offering for needs of Tanzanian women and children. Child care will be available in the Mount Olive Nursery. Sponsored by Mount Olive Women of the ELCA and hosted by Mary Circle.

**Please come and bring a friend!**

## Saint Lucia Sunday Celebrated December 9

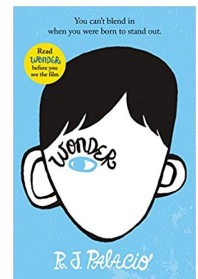
On Sunday, December 9, we will celebrate the Festival of Saint Lucia. This popular tradition, celebrated as part of Mount Olive's Swedish heritage, is rooted in an ancient story. Officially celebrated on December 13 during the darkest days of Advent, Saint Lucia is a symbol of the Light that Christ brings to the world. A legend tells that Saint Lucia came to Sweden during the great famine. She appeared in a halo of light on a ship sailing across Lake Vanern bringing food for the starving people. The custom in Sweden on Saint Lucia Day is for the oldest daughter in a family to be up long before daybreak to serve coffee and lussekatter buns. She

wears a long white dress with a red sash, and on top of her head is a wreath with lighted candles. Naomi, Rachel, and Miriam Circles are busy preparing for the procession of Saint Lucia and her star boys which will take place during each worship service. After the services, come to the Fellowship Hall for coffee and lussekatter buns and a mint served by the mint girls. **Additional bakers for the buns are needed**, contact Sharon Parker for the recipe and directions— 367-2255 or [sharonk2001@msn.com](mailto:sharonk2001@msn.com).



## Monday Book Group

The Monday Book Group gathers again on **December 10** at 6:30 pm, in the library, for their monthly book discussion and a time of Christmas fellowship. The December selection is *Wonder* by R.J. Palacio. The author has called her novel "a meditation on kindness" --indeed, every reader will come away with a greater appreciation for the simple courage of friendship. Bring a gently used book for a gift exchange and a Christmas treat to share. New readers are always welcome to join the group. Contact Jodi Schoer for more information, [mjschoer@charter.net](mailto:mjschoer@charter.net) or 288-1951.



## Pops Orchestra Concert

The Rochester Pops Orchestra continues its 5th Anniversary Season as they present "The Most Wonderful Time Of The Year" Sunday, **December 16**, 2018, 7:00 p.m. at Bethel Lutheran Church. Join the Rochester Pops Orchestra and Chorale as they sing in the season with Christmas selections for everyone to enjoy. Special guests will be local vocal trio Triple Berry Pie, which includes our own Karen Masbruch. Tickets are available now at [www.rochesterpops.com](http://www.rochesterpops.com) or by calling the Box Office at 507-318-0801. Tickets will also be available in the Gathering Area through December 9.



## Festival of Trees

Mount Olive contributed a tree, pictured to the left, to the Festival of Trees. The ornaments were made on God's work. Our hands. Sunday in September. Special thanks to Carrie Fletcher and family for decorating and delivering the tree.

## Spiritual Care

Mount Olive has a Prayer Chain, coordinated by Kim Ignatius. If you have a prayer request and would like the prayer chain to be in prayer for you or someone you love, please contact Kim at: 507-271-6087 or [ignatius.kimberlie@charter.net](mailto:ignatius.kimberlie@charter.net).

**Please contact the church staff if you have any prayer concerns, including any names you would like included in the Sunday prayers in the bulletin:**

- Pastor Glenn: [glenn@molive.org](mailto:glenn@molive.org)
- Church office: 507-288-1580

## Thank You!

Take note of the bulletin board outside the office door where a new crop of thank-you letters are posted. It is heart-warming to read of the gratitude our mission partners have for Mount Olive and its' generosity.



Thank you to the volunteers who helped with the new member reception November 11!

## Ongoing Collections

Cleaning up at home in preparation for the holidays? Did you know that the SSOM team at Mount Olive has an on-going collections of many items that can be put to use by others? Items include: travel sized care products, eye glasses, pop can tabs, and fabric. In addition, the white collection bin in the parking lot can be used for many items. A list of accepted items is available on the Gathering Area cupboard.

## Mount Olive Lutheran Church

2830 18th Ave. NW  
Rochester, MN 55901

Office Hours: 9:00 am-4:00 pm Mon.-Fri.

9:00 am-noon Friday

507-288-1580

Website: [molive.org](http://molive.org)

### Worship Schedule

Services at 5:00 pm Saturday and

8:00 and 10:30 am Sundays

Education Hour 9:15 am Sunday

## Mount Olive Staff

**The Rev. Dr. Glenn Monson**  
Senior Pastor

[glenn@molive.org](mailto:glenn@molive.org) Ext. 206

**Deacon Travis Beck**

Director of Worship, Music, and Arts

[travis@molive.org](mailto:travis@molive.org) Ext. 203

**Kailea Mattheis**

Director of Children, Youth, and Family

[kailea@molive.org](mailto:kailea@molive.org) Ext.207

**Bill Hollander**

Congregational Administrator

[bill@molive.org](mailto:bill@molive.org) Ext. 204

**Nancy Britson**

Director of Congregational Life

[nancy@molive.org](mailto:nancy@molive.org) Ext. 202

**Sherry Will**

Director of Missions and Service

[sherry@molive.org](mailto:sherry@molive.org) Ext. 210

**Carrie Fletcher—Administrative Assistant  
and Nursery Coordinator**

[carrie@molive.org](mailto:carrie@molive.org) Ext. 209